

Chippenham, Wiltshire, SN15

Quickmove
PROPERTIES



£270,000



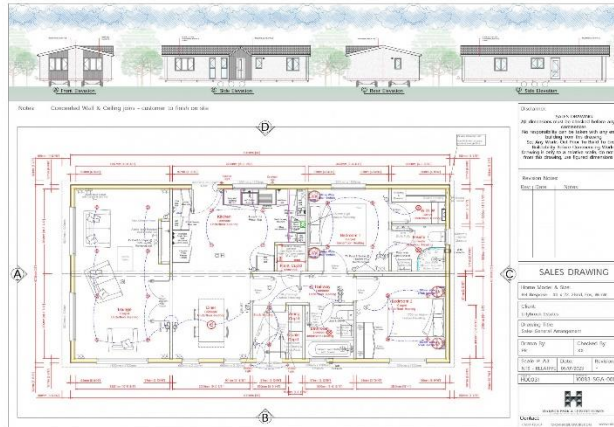
The bungalow style park homes are designed to the highest possible specifications, with premium fixtures and fittings and they benefit from a private gardens and driveway. They are modern, high-quality homes and boast the close-knit community, so valuable to residential park home living. The spacious plots feature large garden areas and fencing between the plots offers residents privacy.

The historical market town of Chippenham is one of the West Country's most vibrant towns situated on the banks of the River Avon and a little over an hour's journey from central London, Chippenham offers an ideal centre for relaxation and exploration of rural Wiltshire, Bath and the Cotswolds. Chippenham is 4 miles south of the M4 and on the mainline rail route from London Paddington to the West Country and just 10 minutes by train to Bath.

Age restriction: Over 50s
 Pet friendly: Cats only
 Site fees: £523.25 per quarter
 Residential license

Key Features

- Brand new home
- Bus Stop Nearby
- Cat Friendly
- Exceptionally High Specification
- Fully Furnished
- Over 50s
- Plots Available
- Residential Park
- High specification
- Friendly park



House to sell?
 Hassle-free Property Part-Exchange is available from Quickmove Properties, with no estate agent fees, no solicitor's fees and no market uncertainty.

CONTACT US

01793 840917

advice@quickmoveproperties.co.uk

