

Milford-On-Sea, Hampshire, SO41

Quickmove PROPERTIES



£325,000

 x 2

 x 2

This brand new, modern-furnished Omar Vision park bungalow (40'x20') is perfect for those looking for a detached, easy to maintain, bungalow-style retirement property. The home features comfortable living and kitchen areas with large windows, modern furniture, and two double bedrooms.

This park is a fabulously-located luxury bungalow development for the over 45's. Located within the thriving village of Milford-On-Sea which hosts a fine selection of shops, award winning restaurants and a vibrant village green where you can enjoy a wide selection of events throughout the year. Set within beautifully landscaped grounds, every home enjoys modern full furnishings, ample parking, a secluded private garden and safe, welcoming community of like-minded residents.

Age restriction: Over 45s

Pet friendly: Yes

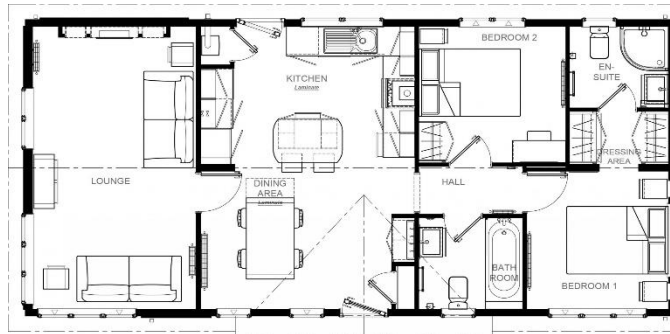
Site fees (at time of listing): £294.07 per month

Residential license

Stock images have been used, the home on site may vary.

Key Features

- Brand new home
- Coastal Location
- Community Living
- Fully Fitted Kitchen
- Spacious Plot
- In person and Virtual Viewings available
- Part Exchange Available
- Pet-friendly
- Prestigious RoyaleLife development



House to sell?
 Hassle-free Property Part-Exchange is available from Quickmove Properties, with no estate agent fees, no solicitor's fees and no market uncertainty.

CONTACT US

01793 840917

advice@quickmoveproperties.co.uk

