

# Loddon Court Park, Reading, Berkshire, RG7

**Quickmove**  
PROPERTIES



£265,000

 x 2

 x 2

This is a beautifully presented pre-owned two bedroom detached park home bungalow built by Tingdene in 2016. It boasts a master bedroom with dressing area and en-suite, a double second bedroom, lounge and separate dining room, double glazing, gas central heating, enclosed garden, two parking spaces and the sellers have permission from the park to erect of a garage.

Loddon Court offers community living for like-minded people. It is surrounded by open countryside and yet is only a few miles south of the bustling town of Reading. Spencers Wood is 1 mile from the park providing day-to-day needs including a post office, a convenience store with newsagent and off-license, a garage, a bakery, a salon and a restaurant.

Age restriction: Over 45s

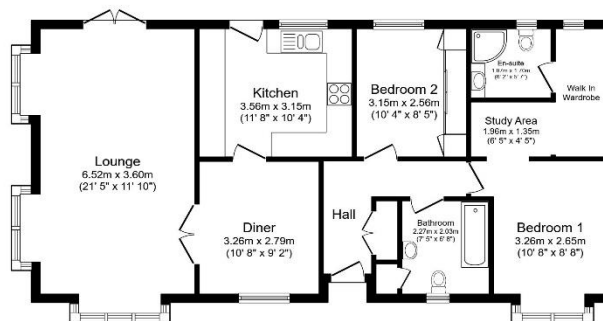
Pet friendly: Yes

Site fees: £226.97 per month

Residential license

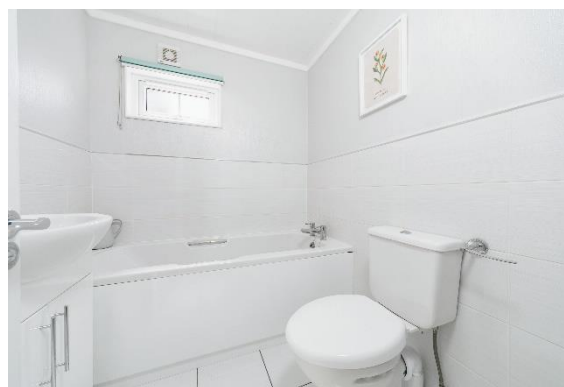
### Key Features

- Countryside Walks
- Garden space
- Off-road Parking
- Over 45's
- Part Exchange Available
- Pet-friendly
- Pre-owned park home
- Two Double Bedrooms
- En Suite



Total floor area 88.5 sq.m. (953 sq.ft.) approx.

This floor plan is for illustrative purposes only. It is not drawn to scale. Any measurements, floor areas (including any total floor area), openings and orientation are approximate. No details are guaranteed. They cannot be relied upon for any purpose and they do not form part of any agreement. No liability is taken for any error, omission or misstatement. A party must rely upon its own inspections. Powered by www.floorplans.com



### House to sell?

Hassle-free Property Part-Exchange is available from Quickmove Properties, with no estate agent fees, no solicitor's fees and no market uncertainty.

### CONTACT US

01793 840917

advice@quickmoveproperties.co.uk

