

# Woodcot Park, Stratford-Upon-Avon, Warwickshire, CV37



£195,000



This pre-owned, modern Omar Regency (38'x20') park home is perfect for those looking for a detached, easy to maintain, bungalow-style property. The home features a fully fitted kitchen, a comfortable living and dining area, two double bedrooms an en suite and a bathroom. The exterior features a parking space and a private, easy-to-maintain garden.

Woodcot Park is located one minute's walk from the village of Wilmcote. The residents' social club on-site organises day trips and meals out. There is also a bus stop outside the park. Wilmcote is home to Mary Arden's house and a handful of old Elizabethan pubs. You can also find amenities here including a post office, church, tea rooms, shop, and train station. Wilmcote is 4 miles from Stratford Upon Avon with all large town facilities and amenities.

Age restriction: Over 50s

Pet friendly: Pet friendly

Site fees: £198 per month

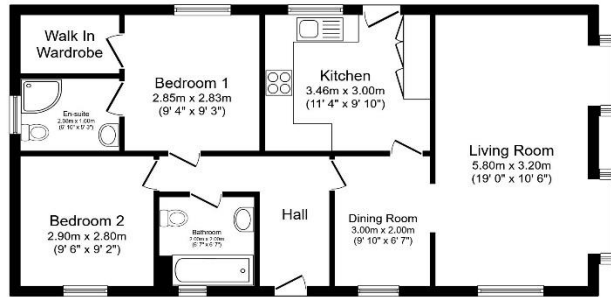
Residential licence

### House to sell?

Hassle-free Property Part-Exchange is available from Quickmove Properties, with no estate agent fees, no solicitor's fees and no market uncertainty.

### Key Features

- Exceptionally High Specification
- Garden space
- Over 50s
- Part Exchange Available
- Pre-owned park home
- Residential Development
- Shops and amenities nearby
- Two Double Bedrooms
- Village location
- Well maintained home



Total floor area 72.5 sq.m. (780 sq.ft.) approx  
 This floor plan is for illustrative purposes only. It is not drawn to scale. Any measurements, floor areas (including any total floor area), openings and orientation are approximate. No details are guaranteed. They cannot be relied upon for any purpose and they do not form part of any agreement. No liability is taken for any error, omission or misstatement. A party must rely upon its own inspection. Powered by [www.bidsagent.com](http://www.bidsagent.com)



## CONTACT US

01793 840917

[advice@quickmoveproperties.co.uk](mailto:advice@quickmoveproperties.co.uk)

