

Borehamwood, Hertfordshire, WD6

Quickmove
PROPERTIES



£349,000

 x 2

 x 1

This brand new, modern-furnished Pathfinder Custom luxury park home (35'x22') is perfect for those looking for a detached, easy to maintain, bungalow-style property. The home features an integrated kitchen, comfortable living area, two double bedrooms and a luxurious shower room. The landscaped exterior boasts a car bay and a garden shed.

Residents can enjoy a community lifestyle with like minded people, milk is delivered daily on the park and cats only are considered (usually one per home). Buses stop outside the park going to Borehamwood, Barnet, Edgware and Burnt Oak.

Age restriction: Over 50s

Pet friendly: Yes

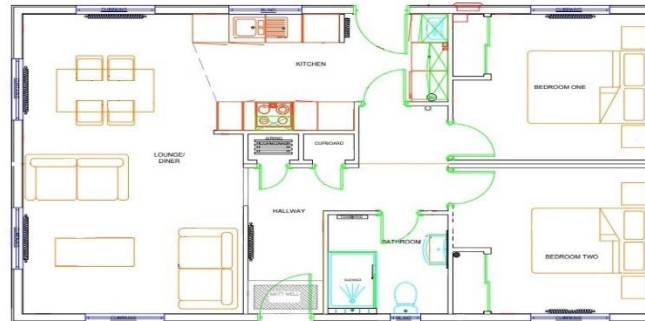
Site fees (at time of listing): £268 per month

Residential license

Stock images have been used, the home on site may vary

Key Features

- Brand new home
- Bus Stop Nearby
- Cat Friendly
- Community Living
- Fully Fitted Kitchen
- Fully Furnished
- Integrated Appliances
- Over 50's
- Part Exchange Available
- Residential Park



House to sell?

Hassle-free Property Part-Exchange is available from Quickmove Properties, with no estate agent fees, no solicitor's fees and no market uncertainty.

CONTACT US

01793 840917

advice@quickmoveproperties.co.uk

