

York, North Yorkshire, YO41

Quickmove
PROPERTIES



£199,990

 x 2

 x 2

This brand new, modern-furnished Wessex Dorset (40'x20') luxury park home is perfect for those looking for a detached, easy to maintain, bungalow-style property. The home features two bedrooms, the master includes an en suite. The home is fully furnished in a traditional style and the kitchen includes integrated appliances.

Situated on the outskirts of a quaint Yorkshire village and only 7 miles from the city of York, this park is perfectly located for those looking for a rural setting. The village of Elvington lies south-east of York on the west bank of the River Derwent and was made a Conservation Area in 1990 due to its cultural and historic significance. Facilities and amenities include a pub, a church, a village shop, sports field, mobile library, village hall and a GP practice which services the community

Age restriction: Over 45s

Pet friendly: Yes (2 dogs per home)

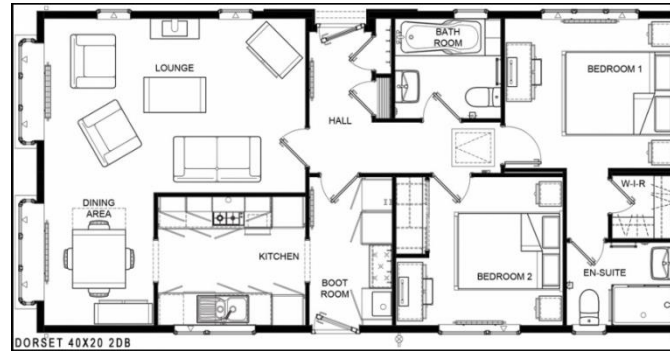
Site fees: £2,400 per year / £200 per month

Residential license

Stock images have been used, the home on-site may vary.

Key Features

- Brand new home
- Countryside location
- Fully Furnished
- Gated and secure community
- Over 45s
- Part Exchange Available
- Pet-Friendly
- Residential Park
- Small exclusive development
- Village facilities nearby



House to sell?

Hassle-free Property Part-Exchange is available from Quickmove Properties, with no estate agent fees, no solicitor's fees and no market uncertainty.

CONTACT US

01793 840917

advice@quickmoveproperties.co.uk

Quickmove
PROPERTIES

