

Reculver Rise, Herne Bay, Kent, CT6



£280,000



This pre-owned modern Omar Middleton (40'x20') park home is perfect for those looking for a detached, easy to maintain, bungalow-style property. The home features a spacious, galley-style kitchen, dining and living area. There are two double bedrooms, one family bathroom and an en suite. The landscaped exterior boasts parking and a garden area.

This prestigious RoyaleLife development is located right on the coast and consists of just 20 homes. Residents of Reculver Rise, have access to a variety of facilities including an indoor swimming pool, coffee lounge and tea gardens. A short stroll from this development is a country park with its Roman fort and towers, magnificent views, and is the perfect place for wildlife spotting. Canterbury is a short drive away, as well as several other seaside towns such as Whitstable and Margate.

Age restriction: Over 45s

Pet Friendly: Yes (2 per home)

Site fees (at time of listing): £249.91 per month

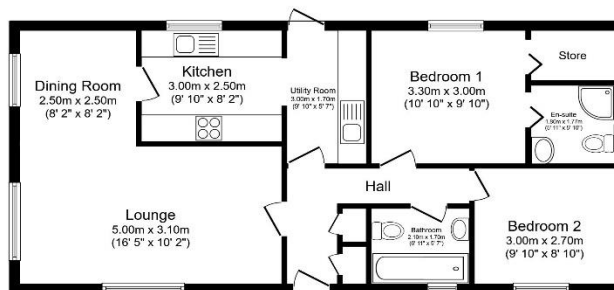
Residential license

House to sell?

Hassle-free Property Part-Exchange is available from Quickmove Properties, with no estate agent fees, no solicitor's fees and no market uncertainty.

Key Features

- Access to leisure facilities
- Coastal Location
- Established Park
- Over 45s
- Part Exchange Available
- Pet-friendly
- Pre-owned park home
- Prestigious RoyaleLife development
- Residential Development
- Well maintained home



Total floor area 72.4 sq.m. (779 sq.ft.) approx

This floor plan is for illustrative purposes only. It is not drawn to scale. Any measurements, floor areas (including any total floor area), openings and orientation are approximate. No details are guaranteed, they cannot be relied upon for any purpose and they do not form part of any agreement. No liability is taken for any error, omission or misstatement. A party must rely upon its own inspection(s). Powered by www.houseagent.com



CONTACT US

01793 840917

advice@quickmoveproperties.co.uk

