

Reculver Rise, Herne Bay, Kent, CT6



£340,000



A superb Stately Albion Woburn design (42'x20') situated in an enviable position on this exclusive residential park. Offering sea views and close walks to the beach, this home should be top of your viewing list. The home features a spacious, kitchen, dining and living area. There are two double bedrooms, one family bathroom and an en suite. The landscaped exterior boasts parking and a garden area.

Residents of this stunning new coastal development have access to a variety of facilities including an indoor swimming pool, coffee lounge and tea gardens. A short stroll from this development is a country park with its Roman fort and towers, magnificent views, and is the perfect place for wildlife spotting.

Age restriction: Over 45s

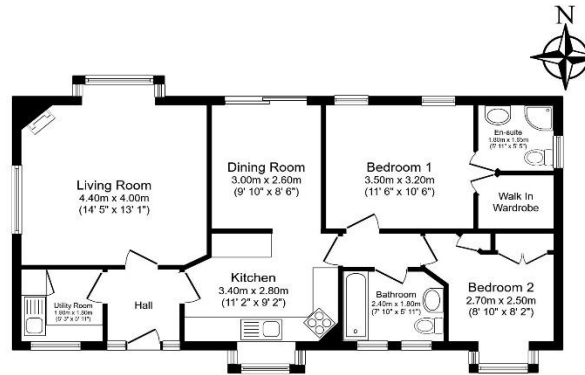
Pet Friendly: Yes (2 per home)

Site fees (at time of listing): £249.91 per month

Residential license

Key Features

- Access to leisure facilities
- Garden space
- Over 45s
- Pet-Friendly
- Established development
- Pre-owned park home
- Prestigious RoyaleLife development
- Residential Development
- Sea front home
- Well maintained home



Total floor area 76.7 sq.m. (826 sq.ft.) approx

This floor plan is for illustrative purposes only. It is not drawn to scale. Any measurements, floor areas (including any total floor area), openings and orientation are approximate. No details are guaranteed, they cannot be relied upon for any purpose and they do not form part of any agreement. No liability is taken for any error, omission or misstatement. A party must rely upon its own inspection(s). Powered by www.houseagent.com



House to sell?

Hassle-free Property Part-Exchange is available from Quickmove Properties, with no estate agent fees, no solicitor's fees and no market uncertainty.

CONTACT US

01793 840917

advice@quickmoveproperties.co.uk

Quickmove
PROPERTIES



The Property
Ombudsman