

# Kings Head Home Park, Newport, Shropshire, TF10

**Quickmove**  
PROPERTIES



£190,000

 x 2

 x 2

This pre-owned, well maintained Omar Middleton (45'x20') park home is perfect for those looking for a detached, easy to maintain, bungalow-style property. The home features a galley-style kitchen, utility room, two bedrooms, and a study. The conservatory ceiling has been upgraded to provide an excellent temperature environment. The home also has a driveway and garden.

Kings Head Home Park is located on the outskirts of the market town of Newport, located North East of Telford. Newport is a lovely town with all the amenities you need on your doorstep, including pubs, shops, recreational activities and green areas. The Aqualate Mere National Nature Reserve is nearby, with walking trails and beautiful scenery, and for golf lovers, the Aqualate course is also nearby.

Age restriction: Over 50's

Site fees: £172 per month

Pet friendly: You can bring pets with you, but they cannot be replaced.

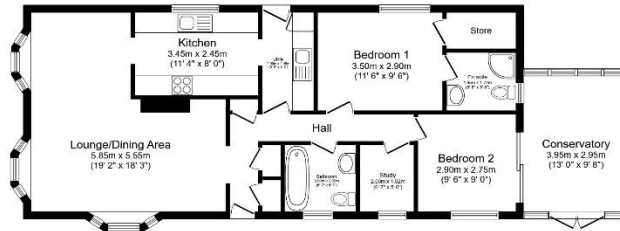
Residential license

### House to sell?

Hassle-free Property Part-Exchange is available from Quickmove Properties, with no estate agent fees, no solicitor's fees and no market uncertainty.

### Key Features

- Driveway
- Garden space
- Integrated Conservatory
- Part Exchange Available
- Residential Development
- Two Double Bedrooms
- Well-maintained home
- Utility
- Study
- Conservatory



Total floor area 93.6 sq.m. (1,007 sq.ft.) approx

This floor plan is for illustrative purposes only. It is not drawn to scale. Any measurements, floor areas (including any total floor area), openings and orientation are approximate. No details are guaranteed. They cannot be relied upon for any purpose and they do not form part of any agreement. No liability is taken for any error, omission or misstatement. A party must rely upon its own inspection(s). Powered by www.foxajart.com



## CONTACT US

01793 840917

advice@quickmoveproperties.co.uk

**Quickmove**  
PROPERTIES

