

Temple Grove Park, Chelmsford, Essex, CM2



£125,000



This pre-owned park home is perfect for those looking for a detached, easy to maintain, bungalow-style property. The home is vacant and has been well maintained. It enjoys a secluded plot surrounded by greenery with a private garden area.

Temple Grove Park is a stunning development surrounded by trees and hedgerows. The park is within easy reach of Chelmsford and the excellent commuter service in London. It combines the convenience of accessibility to the city for entertainment and shopping trips with the pleasures of living in the heart of the picturesque Essex countryside. Nearby shopping facilities are more than adequate and local leisure facilities include golf and swimming.

Age restriction: Over 50s

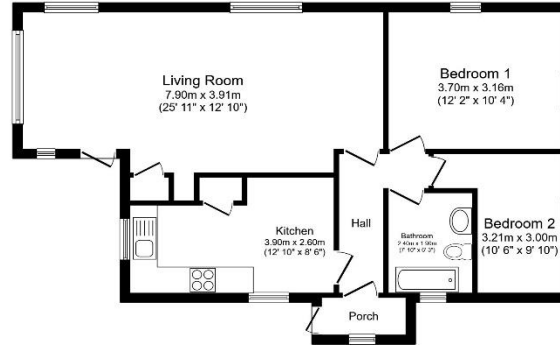
Pet friendly: 1 cat per home

Site fees (at time of listing): £178 per month

Residential license

Key Features

- Community Living
- Countryside location
- Established Park
- Garden space
- Over 50s
- Part Exchange Available
- Pre-owned park home
- Residential Development
- Two Bedrooms



Total floor area 70.3 sq.m. (757 sq.ft.) approx

This floor plan is for illustrative purposes only. It is not drawn to scale. Any measurements, floor areas (including any total floor area), openings and orientation are approximate. No details are guaranteed, they cannot be relied upon for any purpose and they do not form part of any agreement. No liability is taken for any error, omission or misstatement. A party must rely upon its own inspections. Powered by www.kitaplanet.com



House to sell?

Hassle-free Property Part-Exchange is available from Quickmove Properties, with no estate agent fees, no solicitor's fees and no market uncertainty.

CONTACT US

01793 840917

advice@quickmoveproperties.co.uk

Quickmove
PROPERTIES

