

# Dodwell Park, Stratford-Upon-Avon, Warwickshire, CV37

**Quickmove**  
PROPERTIES



£210,000

 x 2

 x 2

This pre-owned, well maintained Tingdene Dolben Lodge (38'x20') park home is perfect for those looking for a detached, easy to maintain, bungalow-style property. The home features a modern kitchen, living and dining areas, a conservatory/sun- room, two double bedrooms with the master having an En-suite shower room and a walk-in wardrobe as well as a further family bathroom. The landscaped exterior boasts an easy-to-maintain garden space, storage shed and greenhouse, driveway and garage.

Dodwell Park is a family-run residential development surrounded by green fields. Set in the heart of Shakespeare Country, Dodwell Park is just two miles south-west of Stratford-upon-Avon. Stratford-upon-Avon has many attractions, amenities, and excellent shopping facilities.

Age restriction: Over 50s

Pet friendly: Yes

Site fees (at time of listing): £188 per month

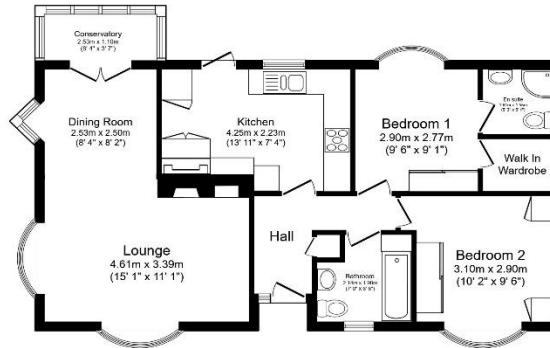
Residential license

### House to sell?

Hassle-free Property Part-Exchange is available from Quickmove Properties, with no estate agent fees, no solicitor's fees and no market uncertainty.

### Key Features

- Conservatory/Sun-Room
- Established Park
- Garage and Driveway
- Garden space
- Over 50s
- Part Exchange Available
- Pet-Friendly
- Pre-owned park home
- Residential Development
- Two Double Bedrooms



Total floor area 73.8 sq.m. (794 sq.ft.) approx  
This floor plan is for illustrative purposes only. It is not drawn to scale. Any measurements, floor areas (including any total floor area), openings and orientation are approximate. No details are guaranteed, they cannot be relied upon for any purpose and they do not form part of any agreement. No liability is taken for any error, omission or misstatement. A party must rely upon its own inspection(s). Powered by www.houseagent.com



## CONTACT US

01793 840917

advice@quickmoveproperties.co.uk

