

Bromyard, Herefordshire, HR7



Price as listed



x 2



x 2

This home is perfect for those looking for a detached, easy to maintain, bungalow style retirement property in a modern secluded development. This Willerby park home features modern, comfortable furniture, two bedrooms and two bathrooms.

Nestled in rural Herefordshire, park residents enjoy access to the park-owned country estate with beautiful countryside walks and views across the Bromyard Downs and Malvern Hills. The park boasts a lovely clubhouse, laundry facilities, hair salon and a warm, friendly and active community of residents. A five-minute drive away is the highly attractive Sapey Golf & Country Club which offers a discount for park residents and hosts several events including quiz nights. 2.5 miles away Bromyard is situated in the valley of the River Frome, near to the county border with Worcestershire. Within the local surroundings of this gorgeous and historic park, you can find a wide range of farms, many of them selling locally grown fresh produce and ingredients.

Age restriction: Over 45s

Pet friendly: No

Site fees: £242.12 per month

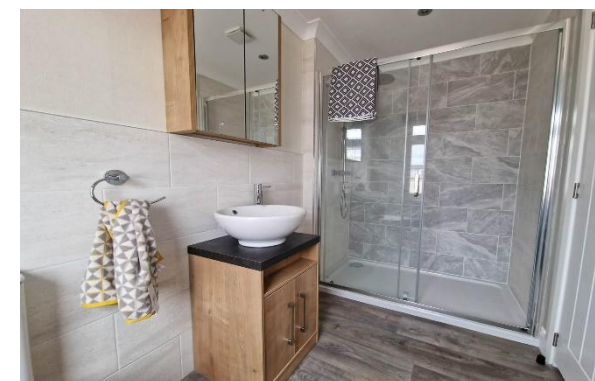
Residential license

House to sell?

Hassle-free Property Part-Exchange is available from Quickmove Properties, with no estate agent fees, no solicitor's fees and no market uncertainty.

Key Features

- Brand new home
- Community Living
- Exceptionally High Specification
- Fully Furnished
- Pet friendly
- Modern design
- Over 45s
- Residential Development
- Two bedrooms
- Modern home



CONTACT US

01793 840917

advice@quickmoveproperties.co.uk

Quickmove
PROPERTIES



The Property
Ombudsman