

# York, North Yorkshire, YO41



£180,000



This modern Willerby Hazlewood (40'x20') luxury park home is perfect for those looking for a detached, easy to maintain, bungalow-style property. The home features a galley-style kitchen, a comfortable living room with an electric fireplace, two double bedrooms and two bathrooms.

Situated on the outskirts of a quaint Yorkshire village and only 7 miles from the city of York, Elvington Park is perfectly located for those looking for a rural setting. The village of Elvington lies southeast of York on the west bank of the River Derwent and was made a Conservation Area in 1990 due to its cultural and historic significance. Facilities and amenities include a pub, a church, a village shop, a sports field, a mobile library, a village hall and a GP practice which services the community

Age restriction: Over 50s

Pet friendly: Yes

Site fees: £200 per month

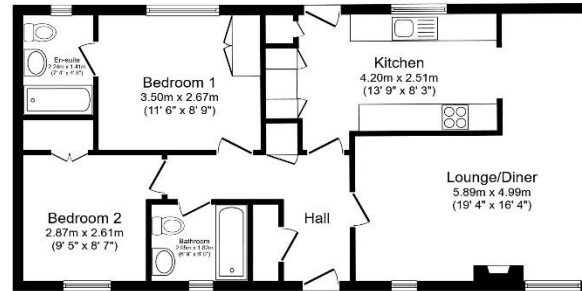
Residential license

### House to sell?

Hassle-free Property Part-Exchange is available from Quickmove Properties, with no estate agent fees, no solicitor's fees and no market uncertainty.

### Key Features

- Countryside location
- Exceptionally High Specification
- Nearly new home
- Over 45s
- Pet-Friendly
- Pre-owned park home
- Private
- Gated Development
- Residential Development
- Small exclusive development



Total floor area 71.4 sq.m. (769 sq.ft.) approx.  
This floor plan is for illustrative purposes only. It is not drawn to scale. Any measurements, floor areas (including any total floor area), openings and orientation are approximate. No details are guaranteed, they cannot be relied upon for any purpose and they do not form part of any agreement. No liability is taken for any error, omission or misstatement. A party must rely upon its own inspection(s). Powered by [www.floorplan.com](http://www.floorplan.com)



## CONTACT US

01793 840917

[advice@quickmoveproperties.co.uk](mailto:advice@quickmoveproperties.co.uk)

**Quickmove**  
PROPERTIES



The Property  
Ombudsman