

Kinderton Park, Middlewich, Cheshire, CW10



£185,000



A two double bedroom (40'x20') Stately Albion Chatsworth Gold which boasts an en-suite to the master bedroom, modern fitted kitchen, and driveway on this gated residential development for the over 50's.

Kinderton Park is ideally located in the beautiful Cheshire countryside. The grounds are landscaped and well-maintained, providing a peaceful, and beautiful location. Nearby is the town of Middlewich, which lies on the confluence of three rivers, with three canals running through the town as well. Middlewich also has good motorway links to the nearby cities of Manchester and Liverpool.

Age restriction: Over 45s

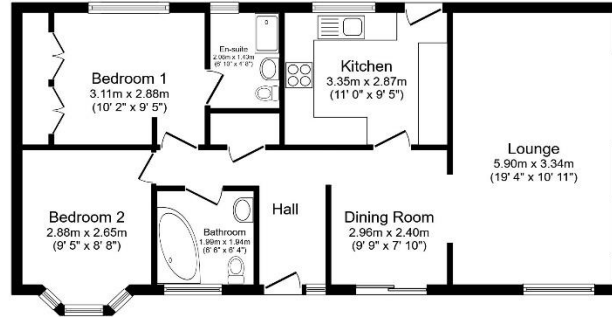
Pet friendly: Yes

Site fees (at time of listing): £184 per month

Residential license

Key Features

- Community Living
- Established Park
- Exceptionally High Specification
- Over 45s
- Park Home Bungalow
- Pet-Friendly
- Pre-owned park home
- Private
- Gated Development
- Residential Development



Total floor area 72.5 sq.m. (780 sq.ft.) approx

This floor plan is for illustrative purposes only. It is not drawn to scale. Any measurements, floor areas (including any total floor area), openings and orientation are approximate. No details are guaranteed, they cannot be relied upon for any purpose and they do not form part of any agreement. No liability is taken for any error, omission or misstatement. A party must rely upon its own inspection(s). Powered by www.houseagent.com



House to sell?

Hassle-free Property Part-Exchange is available from Quickmove Properties, with no estate agent fees, no solicitor's fees and no market uncertainty.

CONTACT US

01793 840917

advice@quickmoveproperties.co.uk

Quickmove
PROPERTIES

