

Springvale Park, Bothamsall Nr Retford, Nottinghamshire, DN22

Quickmove
PROPERTIES



£185,000

 x 2

 x 2

This well maintained, pre-owned (40'x20') park home is perfect for those looking for a detached, easy to maintain, bungalow-style property. The home features a large veranda with wonderful views of the surrounding countryside, a kitchen with plenty of cupboard space and an island leading to a dining area with features, full-height windows, and French doors. There is a comfortable living space with a log burner, two double bedrooms, an en suite and a bathroom.

Springvale Park is set in an area of outstanding beauty in the Nottinghamshire countryside. The park is uniquely set in 150 acres, with tranquil surroundings, picturesque landscape, and a cafe, bar and farm shop opening soon. There are 6 fishing lakes on the park as well as plenty of countryside walks. 4 miles from the town of Tuxford which is a lovely old coaching town.

Age restriction: Over 50s

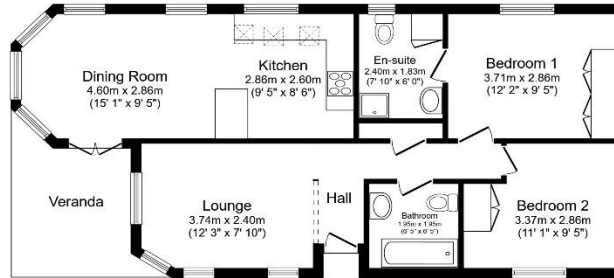
Pet friendly: Yes

Site fees (at time of listing): £125 per month

Residential license

Key Features

- Countryside Views
- Decking
- Log burner
- Fishing lake on site
- Over 50s
- Secure gated entrance
- Pet-friendly
- Pre-owned park home
- Rural Location
- Two Double Bedrooms
- Well maintained home



Total floor area 66.3 sq.m. (713 sq.ft.) approx
This floor plan is for illustrative purposes only, it is not drawn to scale. Any measurements, floor areas (including any total floor area), openings and orientation are approximate. No details are guaranteed, they cannot be relied upon for any purpose and they do not form part of any agreement. No liability is taken for any error, omission or misstatement. A party must rely upon its own inspection(s). Powered by www.b2cagent.com



CONTACT US

01793 840917

advice@quickmoveproperties.co.uk

