

Eddisbury Hill, Northwich, Cheshire, CW8



£160,000



A well-presented two double bedroom park home bungalow built by Tingdene (36'x20') which has an additional conservatory as well as elevated views, a generous plot with driveway parking for multiple cars. The home also has two double bedrooms, an en suite and a bathroom.

Eddisbury Hill Park is located on the edge of Delamere Forest with stunning countryside views. Walkers can enjoy the footpaths that connect the park to Delamere Forest and the surrounding hills. The development is surrounded by idyllic villages and the city of Chester is just 11 miles away. The nearest village is Delamere, where you can find a local village store, a pub, medical practice, and an active community centre all within easy walking distance.

Age restriction: Over 50s

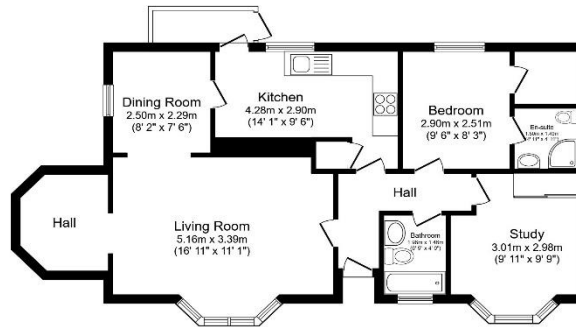
Pet friendly: Yes

Site fees (at time of listing): £165.21 per month

Residential license

Key Features

- Countryside location
- Generous Rear Garden
- Integrated Conservatory
- Over 55's
- Part Exchange Available
- Pet-friendly
- Pre-owned park home
- Residential Development
- Two Double Bedrooms
- Well maintained home



Total floor area 70.9 sq.m. (763 sq.ft.) approx.
The floor plan is for illustrative purposes only. It is not drawn to scale. Any measurements, floor areas (including any total floor areas), openings and orientation are approximate. No details are guaranteed, they cannot be relied upon for any purpose and they do not form part of any agreement. No liability is taken for any error, omission or misstatement. A party must rely upon its own inspection(s). Powered by www.floorplan.com



House to sell?
 Hassle-free Property Part-Exchange is available from Quickmove Properties, with no estate agent fees, no solicitor's fees and no market uncertainty.

CONTACT US

01793 840917

advice@quickmoveproperties.co.uk

