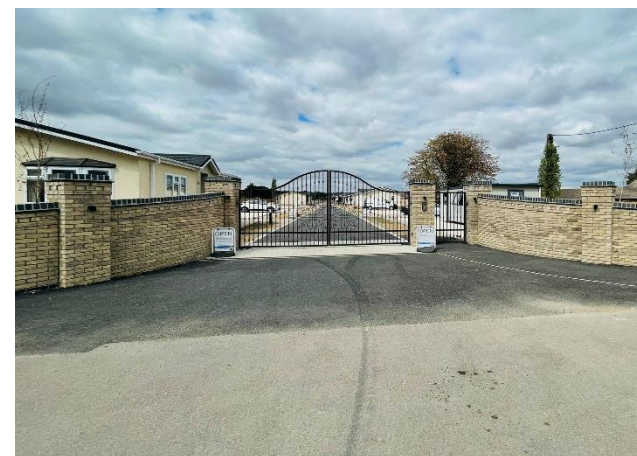


Bury St. Edmunds, Suffolk, IP28



£245,000



This brand new, modern-furnished Stately Badminton (46'x20') luxury park home is perfect for those looking for a detached, easy to maintain, bungalow-style property. The home features a kitchen with integrated appliances, a comfortable living room, two bedrooms and two bathrooms. The landscaped exterior includes a driveway for 2 cars.

This gated park is landscaped and private, offering quiet, safe and secure living. In a countryside setting, residents can enjoy walking trails, ideal for pet owners. This idyllic park is in the village of Red Lodge in Suffolk, close to the historic market, cathedral town of Bury St. Edmunds and port town of Ipswich.

Age restriction: Over 45s

Pet friendly: Yes

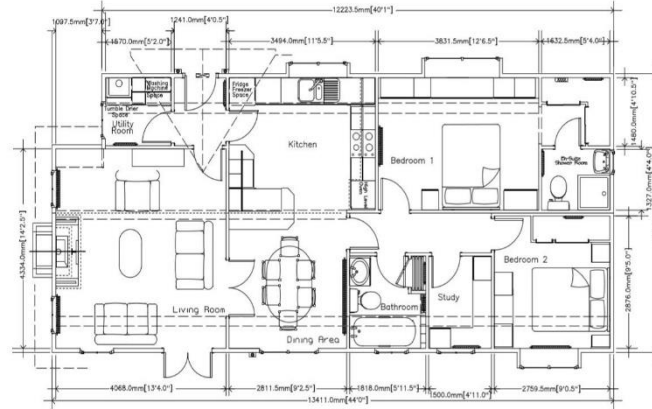
Site fees (at time of listing): £250 per month

Residential license

Stock images have been used, the home on site may vary.

Key Features

- Brand new home
- Bus stop at park entrance
- Fully Furnished
- Over 45's
- Parking for 2 cars
- Part Exchange Available
- Pet Friendly Park
- Private
- Gated Development
- Range of homes available



House to sell?

Hassle-free Property Part-Exchange is available from Quickmove Properties, with no estate agent fees, no solicitor's fees and no market uncertainty.

CONTACT US

01793 840917

advice@quickmoveproperties.co.uk

Quickmove
PROPERTIES

