

# Abridge, Essex, RM4

**Quickmove**  
PROPERTIES



£250,000



This brand new, modern-furnished Tingdene Cosgrove (40'x12') luxury park home is perfect for those looking for a detached, easy to maintain, bungalow-style property. The home features a fully fitted kitchen with integrated appliances, a living area with modern, comfortable furniture, two double bedrooms, one family bathroom and en suite.

The park offers peaceful and tranquil living while being a short drive from local amenities, with a local shop and bus stop at the park entrance. The development is located in a desirable, well-connected area, just 5 miles from the M25 and 2 miles from the M11. Abridge village is within walking distance, where you can find amenities and leisure activities.

Age restriction: Over 50s

Pet friendly: Yes

Site fees (at time of listing): £280 per month

Residential license

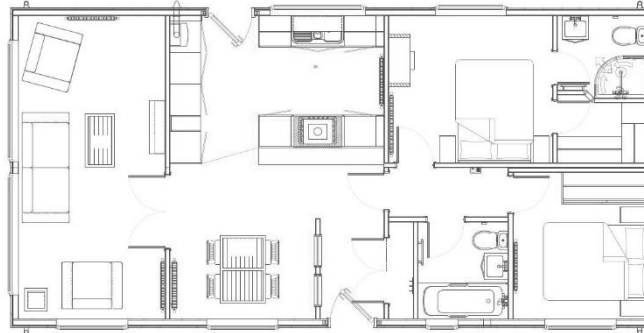
Stock images have been used, the home on site may vary

### House to sell?

Hassle-free Property Part-Exchange is available from Quickmove Properties, with no estate agent fees, no solicitor's fees and no market uncertainty.

### Key Features

- Brand new home
- Bus stop at park entrance
- Cat Friendly
- Driveway
- Fully Furnished
- Local shop at park entrance
- Modern design
- Over 50s
- Part Exchange Available
- Residential Development



## CONTACT US

01793 840917

[advice@quickmoveproperties.co.uk](mailto:advice@quickmoveproperties.co.uk)

**Quickmove**  
PROPERTIES

