

# Berwick-Upon-Tweed, Northumberland, TD15

**Quickmove**  
PROPERTIES



£149,950

 x 2

 x 2



This brand new, modern furnished Victory Lakewood (42'x14' 2022 model) luxury park home is perfect for those looking for a detached, easy to maintain, bungalow-style property. This home features fitted kitchen with integrated appliances, and an open-plan living and dining area. The home has two bedrooms and a family bathroom.

The development is well located in 44 acres of stunning countryside on the outskirts of Berwick-upon-Tweed on the Scottish border. Despite its peaceful location, residents are still well connected, with quick access to the North and the South via the A1 which is just 2 minutes from the park.

Age restriction: Over 45s

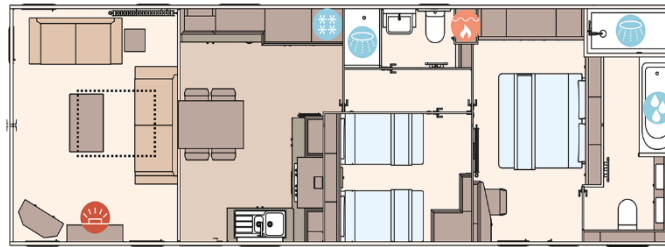
Pet friendly: Yes

Site fees (at time of listing): £240 per month

Residential license

### Key Features

- Brand new home
- Countryside location
- Fully Furnished
- Garden Shed
- On-site Bar and Restaurant
- Over 45's
- Part Exchange Available
- Residential Park Home



### House to sell?

Hassle-free Property Part-Exchange is available from Quickmove Properties, with no estate agent fees, no solicitor's fees and no market uncertainty.

### CONTACT US

01793 840917

[advice@quickmoveproperties.co.uk](mailto:advice@quickmoveproperties.co.uk)

**Quickmove**  
PROPERTIES

