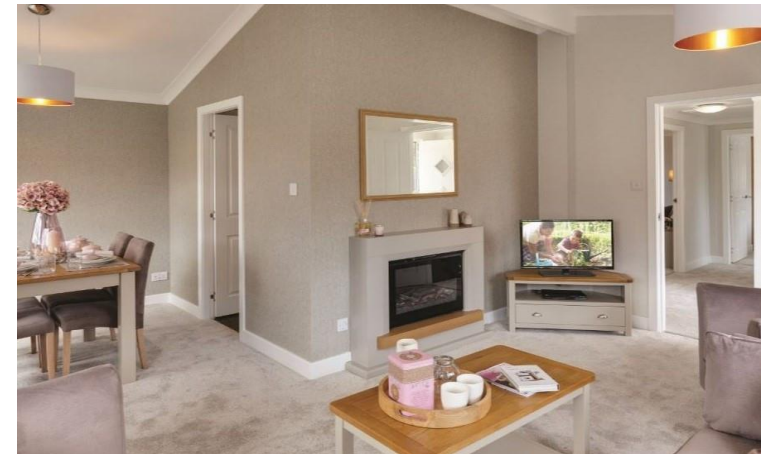


Hereford, Herefordshire, HR2

Quickmove
PROPERTIES



£149,999

 x 2

 x 2

This brand new, modern-furnished Willerby Hazlewood (42'x20') luxury park home is perfect for those looking for a detached, easy to maintain, bungalow-style property. The home features a modern, spacious kitchen and dining room with integrated appliances, leading to a comfortable living room.

The park is ideally located for offering the peace of the countryside whilst still being close to amenities. Hereford town centre is just 2 miles away and there is a bus stop directly at the park entrance to the centre of town. Wye Valley, an Area of Outstanding Natural Beauty is just 6 miles away, where you can find walking routes and nature trails.

Age restriction: Over 45s

Pet friendly: Yes

Site fees (at time of listing): £175 per month

Residential license

Stock images have been used, the home on-site may vary.

Key Features

- Brand new home
- Bus stop at park entrance
- Countryside Views
- Dog friendly
- Fully Furnished
- Over 45's
- Part Exchange Available
- Private Decking
- Residential Development
- Small exclusive development



CONTACT US

01793 840917

advice@quickmoveproperties.co.uk

Quickmove
PROPERTIES



The Property
Ombudsman