

The Moorings, Telford, Shropshire, TF6

Quickmove
PROPERTIES



£176,000

 x 2

 x 1

This pre-owned, modern park home is perfect for those looking for a detached, easy to maintain, bungalow-style property. The home has a modern, fitted kitchen, separate living and dining room with large windows and an electric fireplace, two double bedrooms and a bathroom. The landscaped exterior boasts a driveway and an easy-to-maintain garden area.

The Moorings is a lovely, small development of 25 homes, located in the countryside a short distance from local towns. The Ugly Duckling pub is a short walk from the park entrance and serves good food and has an outdoor seating area. The development is located an hour northwest of the centre of Birmingham, a 13-minute drive from Telford and a 26-minute drive from Shrewsbury. The area north of the development is full of countryside walks and waterways.

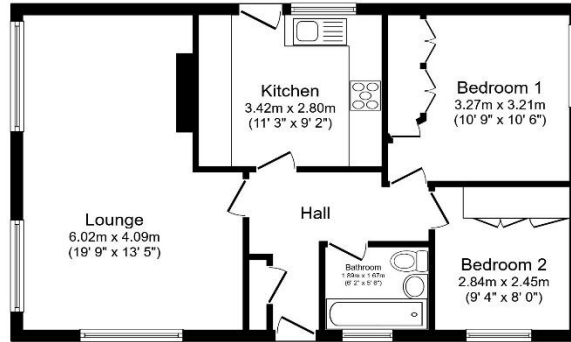
Age restriction: Over 55s
 Pet friendly: Yes
 Site fees: TBC
 Residential license

House to sell?

Hassle-free Property Part-Exchange is available from Quickmove Properties, with no estate agent fees, no solicitor's fees and no market uncertainty.

Key Features

- Countryside location
- Over 55's
- Part Exchange Available
- Pet-Friendly
- Pre-owned park home
- Town facilities nearby
- Two Double Bedrooms
- Well-maintained home
- Private garden
- Established park



Total floor area 59.7 sq.m. (642 sq.ft.) approx
This floor plan is for illustrative purposes only. It is not drawn to scale. Any measurements, floor areas (including any total floor area), openings and orientation are approximate. No details are guaranteed, they cannot be relied upon for any purpose and they do not form part of any agreement. No liability is taken for any error, omission or misstatement. A party must rely upon its own inspection(s). Powered by www.floorplan.com



CONTACT US

01793 840917

advice@quickmoveproperties.co.uk

