

Reculver Rise, Herne Bay, Kent, CT6



£295,000



This home is situated on a corner plot on this exclusive area of Reculver Rise. The 42x20 Willerby Charnwood has a modern design, it has a galley-style kitchen with a dining area and a comfortable living room with an electric fireplace. There are two double bedrooms and two bathrooms.

Residents of this stunning coastal development have access to a variety of facilities including an indoor swimming pool, coffee lounge and tea gardens. A short stroll from this development is a coastal path and country park with a Roman fort and towers, and magnificent sea views, and is the perfect place for wildlife spotting. Canterbury is a short drive away, as well as several other seaside towns such as Whitstable and Margate.

Age restriction: Over 45s

Pet Friendly: Yes (2 per home)

Site fees (at time of listing): £249.91 per month

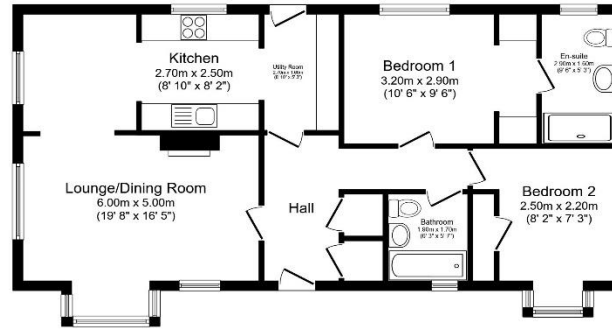
Residential license

House to sell?

Hassle-free Property Part-Exchange is available from Quickmove Properties, with no estate agent fees, no solicitor's fees and no market uncertainty.

Key Features

- Access to leisure facilities
- Disabled Access
- Garden space
- Over 45s
- Part Exchange Available
- Pet-Friendly
- Parking for 2 cars
- Residential Development
- Two Bedrooms
- Well maintained home



Total floor area 77.3 sq.m. (832 sq.ft.) approx

This floor plan is for illustrative purposes only. It is not drawn to scale. Any measurements, floor areas (including any total floor area), openings and orientation are approximate. No details are guaranteed, they cannot be relied upon for any purpose and they do not form part of any agreement. No liability is taken for any error, omission or misstatement. A party must rely upon its own inspection(s). Powered by www.thisagent.com



CONTACT US

01793 840917

advice@quickmoveproperties.co.uk

