

Harvest Hill Park, Coventry, West Midlands, CV5



£160,000



This well maintained, pre-owned park home is perfect for those looking for a detached, easy to maintain, bungalow-style property. The home features a fitted kitchen, living room with electric fireplace, two double bedrooms, a bathroom, and a private garden area.

Situated just 2 miles northwest of Coventry, in a charming, wooded area of Allesley, Harvest Hill Park is a picturesque residential park. It is part of a tranquil rural setting near the peaceful village of Meriden, providing convenient access to various towns, villages, and numerous places of interest in the popular Warwickshire region. Coventry is just a few miles away, and Birmingham can also be easily reached from the park.

Age restriction: Over 50s

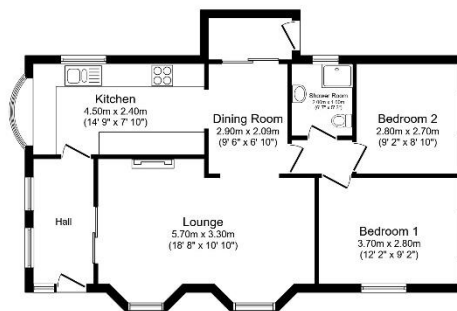
Pet friendly: Yes

Site fees: £146.93 per month (as of 2022)

Residential license

Key Features

- Countryside location
- Garden space
- Over 50s
- Part Exchange Available
- Pre-owned park home
- Residential Development
- Two Bedrooms
- Woodland setting
- Pet friendly
- Community living home



Total floor area 69.8 sq.m. (751 sq.ft.) approx
This floor plan is for illustration purposes only. It is not intended to be used for any measurement. Room sizes (including any built-in fixtures, cupboards and variations) are approximate. No liability is accepted. They cannot be relied upon for any purpose and they do not form part of any agreement. No liability is taken for any error, omission or misstatement. A party must rely upon their own inspection. Powered by www.quickmove.com



House to sell?

Hassle-free Property Part-Exchange is available from Quickmove Properties, with no estate agent fees, no solicitor's fees and no market uncertainty.

CONTACT US

01793 840917

advice@quickmoveproperties.co.uk

