

Stratford-Upon-Avon, Warwickshire, CV37



£240,000



This home is in excellent internal condition and is a two double bedroom (40'x20') Omar Middleton design boasting a separate Lounge and Dining room, modern fitted kitchen, en-suite shower room to the master bedroom, a decked patio area and driveway.

Nestled on the edge of the beautiful Cotswolds, this park has a stunning backdrop of rolling countryside, whilst boasting excellent transport routes to nearby Stratford-upon-Avon, the Cotswolds and Chipping Campden. Stratford-upon-Avon is just 2 miles away. The nearest supermarket is just up the road and the nearest medical centre is in Lower Quinton. The park is also close to the cities of Birmingham and Coventry with all big city amenities and facilities.

Age restriction: Over 50s

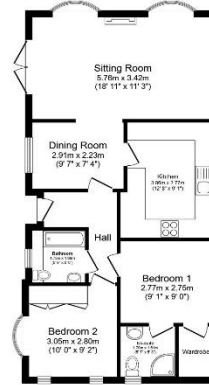
Pet friendly: Yes

Site fees: £229.15 pcm

Residential license

Key Features

- Community Living
- Decked Patio Area
- Decking
- Modern design
- Over 50s
- Part Exchange Available
- Pet-Friendly
- Pre-owned park home
- Private, Gated Development



Total floor area 70.6 sq.m. (760 sq.ft.) approx

This floor plan is for illustrative purposes only. It is not drawn to scale. Any measurements, floor areas (including any total floor area), openings and orientation are approximate. No details are guaranteed, they cannot be relied upon for any purpose and they do not form part of any agreement. No liability is taken for any error, omission or misstatement. A party must rely upon its own inspection(s). Powered by www.idealagent.com



House to sell?

Hassle-free Property Part-Exchange is available from Quickmove Properties, with no estate agent fees, no solicitor's fees and no market uncertainty.

CONTACT US

01793 840917

advice@quickmoveproperties.co.uk

Quickmove
PROPERTIES



The Property
Ombudsman