

Cotswold Grange Country Park, Tewkesbury, GL20

Quickmove
PROPERTIES



£289,995

 x 2

 x 2

This pre-owned, modern Omar Anniversary (50'x22') luxury park home is perfect for those looking for a detached, easy to maintain, bungalow-style property. The home features a spacious kitchen and dining area, a separate living room with large windows, two double bedrooms and two bathrooms. The home has views over the countryside, decking and parking.

Cotswold Grange Country Park is located down a country lane on the outskirts on Twyning in Gloucestershire, alongside the River Avon. Cheltenham, Worcester and Gloucester are within easy reach, providing plenty of amenities. The nearby village of Twyning offers the nearest amenities including a village shop and post office.

Age restriction: Over 50s

Pet friendly: Yes

Site fees (at time of listing): £194.73 per month

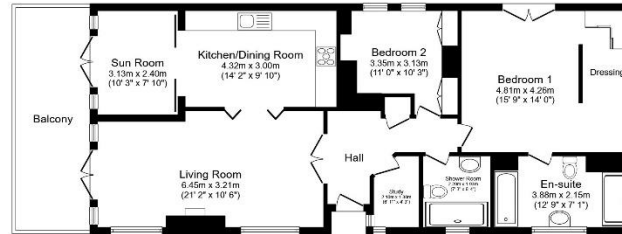
Residential license

House to sell?

Hassle-free Property Part-Exchange is available from Quickmove Properties, with no estate agent fees, no solicitor's fees and no market uncertainty.

Key Features

- Countryside location
- Over 50s
- Part Exchange Available
- Pet-friendly
- Pre-owned park home
- Private Decking
- Residential Development
- Stunning views
- Two Double Bedrooms
- Well maintained home



Total floor area 97.8 sq.m. (1,053 sq.ft.) approx

This floor plan is for illustrative purposes only. It is not drawn to scale. Any measurements, floor areas (including any total floor area), openings and orientation are approximate. No details are guaranteed, they cannot be relied upon for any purpose and they do not form part of any agreement. No liability is taken for any error, omission or misstatement. A party must rely upon its own inspection(s). Powered by www.housepart.com



CONTACT US

01793 840917

advice@quickmoveproperties.co.uk

