

# Harlow, Essex, CM19



£285,000



x 2



x 2

This brand new, modern-furnished Lodge (42'x22') is perfect for those looking for a detached, easy to maintain, bungalow-style property. The home features an open plan kitchen and living area, two double bedrooms and two bathrooms. The landscaped exterior boasts decking, parking, and an optional shed.

This 12-month leisure development is located next to a 32-acre lake in the picturesque Lee Valley Regional Park, where you can find an abundance of wildlife. There are great facilities on site including a pub/restaurant on the waterfront with stunning views. You can find an excellent selection of food and drink here. The park is pet friendly and you can walk for miles around the grounds, lakes, and surrounding lochs. There is also the potential to moor a boat here. The park is secure, with a gated entrance, CCTV, and a reception where visitors can sign in.

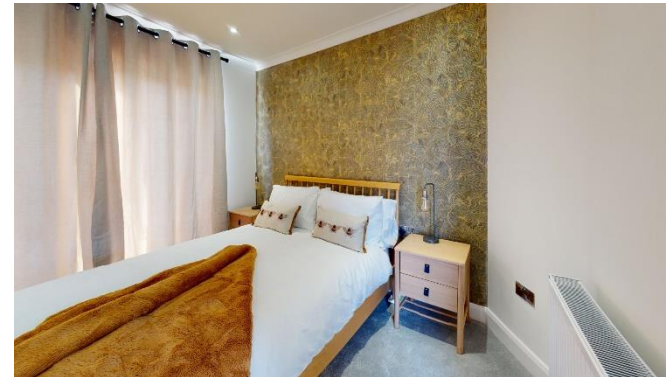
Nearby you can find Roydon village has 2 pubs, a pharmacy and a Morrison's. The nearest train station is in Roydon and a 5-minute walk from the development, here you can get to Central London in 30 minutes. Harlow town and shopping centre is 3.5 miles away where you can find further shops and amenities.

By water from Roydon Marina Village, you'll lock onto the River Stort allowing you to cruise East enjoying quiet waters and secluded stops through Sawbridgeworth and Bishop's Stortford. Heading South from Roydon leads to the junction of the River Lee and River Stort; there are several pubs within a short cruise in either direction.

Age restriction: None  
Pet friendly: Yes  
Site fees: £4,521 per year

## Key Features

- 12 Month Leisure Licence
- Brand new home
- Fully Furnished
- Home buying service
- Parking space
- Pet-Friendly
- Private
- Gated Development
- Shops and



## CONTACT US

01793 840917

[advice@quickmoveproperties.co.uk](mailto:advice@quickmoveproperties.co.uk)

**Quickmove**  
PROPERTIES

