

St Ives, Cornwall, TR26

Quickmove
PROPERTIES



£360,000

 x 2

 x 2

This brand new, modern-furnished Omar Alderney (45'x20') luxury park home is perfect for those looking for a detached, easy to maintain, bungalow-style property. The home features a spacious, open plan kitchen, dining and living area, with comfortable furnishings, large windows and two double beds.

This brand-new gated development will consist of just 9 homes. Located a short distance from the St Ives coast, this development offers stunning views and overlooks Rosewall Hill, an Area of Outstanding Natural Beauty.

This park is ideally located to make the most of the beautiful Cornish coast and countryside. With a bus stop outside the park, residents can explore the local area with ease. St Ives Harbour is a 15-minute walk, with plenty of local shops and amenities in the same area. St Ives train station is in the town and offers easy connections to the rest of the country. The park is also located a short walk from Porthminster Beach and Porthmeor Beach. Penzance is a 20-minute drive to the south and Lands End is only a 36-minute drive away.

Site fees: £195 per month

Pet Friendly: Yes

Age restrictions: Over 45's

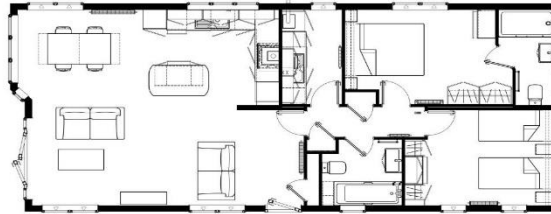
Stock images have been used, the home on site may vary

House to sell?

Hassle-free Property Part-Exchange is available from Quickmove Properties, with no estate agent fees, no solicitor's fees and no market uncertainty.

Key Features

- 100% Part-Exchange
- Brand new home
- Bus Stop Nearby
- Coastal Location
- Family-Owned
- Fully Furnished
- Gated and secure community
- Pet-Friendly
- Residential Park



Alderney 45' x 20' 2DG



CONTACT US

01793 840917

advice@quickmoveproperties.co.uk

Quickmove
PROPERTIES

