

Bury St. Edmunds, Suffolk, IP28

Quickmove
PROPERTIES



£184,995



x 2



x 2

This brand new, fully furnished Omar Newmarket (40'x20') luxury park home is perfect for those looking for a detached, easy to maintain, bungalow-style retirement property. The home itself boasts double glazing, gas central heating as well as a modern, fitted kitchen with appliances and two spacious bedrooms.

This brand new premium residential development for the over 50's is emerging next to the tranquil village of Beck Row, in Suffolk, where you can enjoy a relaxed and peaceful lifestyle. The park is pet friendly and has a bus stop nearby. This park will be perfect for anyone looking to move into a safe and secure community of like-minded individuals.

Nearby amenities including a local shop, pub and doctors are all within a few miles. Only a 30-minute drive away, you'll find both the market towns of Bury St Edmunds and Thetford. Bury St Edmunds is famed for its brewing and malting activities, whilst at Thetford you can explore the quaint town marked by history, with a strong connection to nature. You can enjoy nearby Thetford Forest Park, with bike trails, wildlife walks and an arboretum.

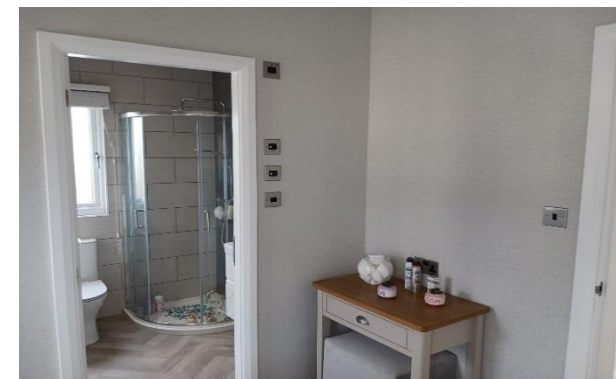
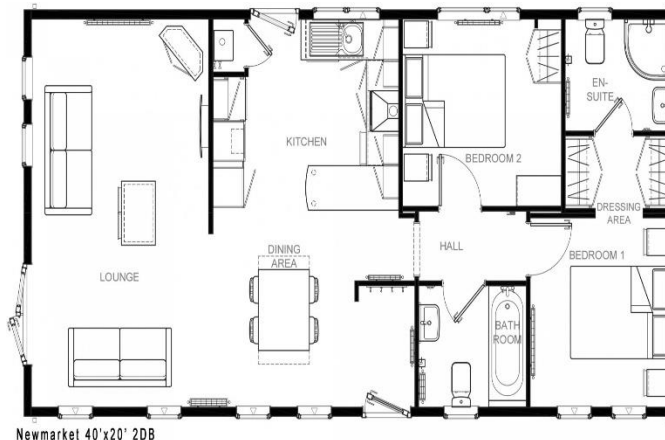
Age restriction: Over 50's
Pet friendly: Yes
Site fees: £243.46 per month

House to sell?

Hassle-free Property Part-Exchange is available from Quickmove Properties, with no estate agent fees, no solicitor's fees and no market uncertainty.

Key Features

- Brand new home
- Fully Furnished
- Pet friendly
- Two bedrooms and bathrooms
- Exclusively for over 50s
- Part-Exchange available for price certainty



CONTACT US

01793 840917

advice@quickmoveproperties.co.uk

Quickmove
PROPERTIES



The Property
Ombudsman