

# Abridge, Essex, RM4

**Quickmove**  
PROPERTIES



£320,000

 x 2

 x 2

This brand new, modern-furnished Prestige Sonata (40'x20') luxury park home is perfect for those looking for a detached, easy to maintain, bungalow-style property. The home features a spacious kitchen and dining area, separate living space, two double bedrooms and two bathrooms. The exterior features a garden area and a block paved driveway.

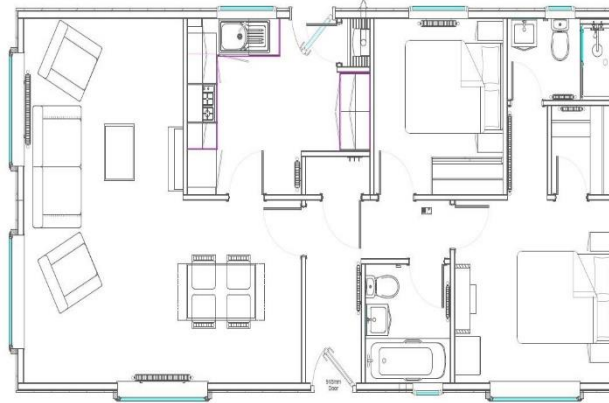
This residential development features 65 homes and is exclusive for the over 50s. The park offers peaceful and tranquil living while being a short drive from local amenities, with a local shop and bus stop at the park entrance. The park home lifestyle provides community living for like-minded people and this park is also cat friendly. The park is landscaped and private, with plenty of green space.

The development is located in a desirable, well-connected area, just 5 miles from the M25. It is 15 miles from London and a short drive from Epping Forest. Abridge village is within walking distance, where you can find amenities and leisure activities as well as a mobile library that visits once a week.

Site fees (at time of listing): £280 per month  
Pet friendly: Yes (1 cat)  
Age Restriction: Over 50's

### Key Features

- Brand new home
- Bus stop at park entrance
- Cat Friendly
- Driveway
- Fully Furnished
- Local shop at park entrance
- Modern design
- Over 50s
- Part Exchange Available



### CONTACT US

01793 840917

[advice@quickmoveproperties.co.uk](mailto:advice@quickmoveproperties.co.uk)

**Quickmove**  
PROPERTIES

