

Abridge, Essex, RM4



£325,000



This brand new, modern-furnished Stately Goodwood (36'x22') luxury park home is perfect for those looking for a detached, easy to maintain, bungalow-style property. The home features a spacious kitchen and dining area, separate living space, two double bedrooms and two bathrooms. The exterior features a garden area and a block paved driveway with views of the surrounding fields.

This residential development features 65 homes and is exclusive for the over 50s. The park offers peaceful living while being a short drive from local amenities, with a shop and bus stop at the park entrance. The park home lifestyle provides community living for like-minded people. The park is landscaped and private, with plenty of green space and offers safe and secure living for residents.

The development is in a desirable, well-connected area, just 5 miles from the M25. It is 15 miles from London and a short drive from Epping Forest. Abridge village is within walking distance, where you can find amenities and leisure activities as well as a mobile library that visits once a week. Further afield are Chigwell and Loughton.

Site fees: £280 per month

Pet friendly: Yes (1 cat)

Age restriction: Over 50's

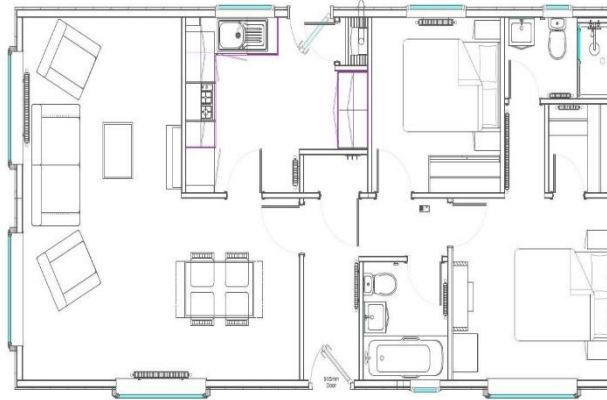
Stock Images have been used, the home on site may vary.

House to sell?

Hassle-free Property Part-Exchange is available from Quickmove Properties, with no estate agent fees, no solicitor's fees and no market uncertainty.

Key Features

- Brand new home
- Bus stop at park entrance
- Cat Friendly
- Driveway
- Fully Furnished
- Local shop at park entrance
- Modern design
- Over 50s
- Part Exchange Available



CONTACT US

01793 840917

advice@quickmoveproperties.co.uk

Quickmove
PROPERTIES

