

Windsor, Berkshire, SL4



£85,000



This is a one double bedroom detached park home (40'x10') located on this popular residential park close to Windsor. The home has had a new kitchen and new flooring installed. There is double glazing and gas central heating as well as a useful utility room to the side, a driveway with parking for 2 cars and a small garden.

This superb residential park is a well-established family park that offers the ultimate in residential home living and is ideally located in the Thames Valley, between Ascot, Windsor and Maidenhead and offers a rural retreat that is just a stone's throw from local amenities. The park has no age restriction, and amenities are close by, with a village store at the park entrance.

Age restriction: None

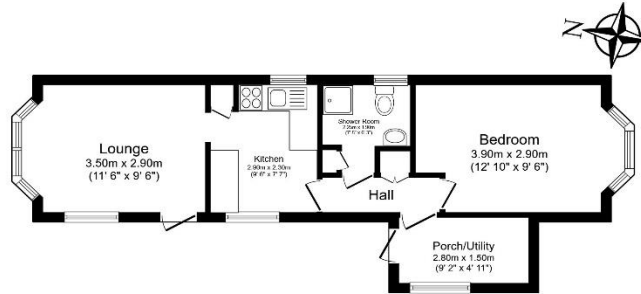
Pet friendly: Yes (One neutered cat)

Site fees: £230.00 per month

Residential license

Key Features

- Countryside location
- Driveway
- Established Park
- Garden space
- No age restriction
- Part Exchange Available
- Pre-owned park home
- Residential Development
- Shop on park
- Well maintained home



Total floor area 40.8 m² (439 sq.ft.) approx

This floor plan is for illustrative purposes only. It is not drawn to scale. Any measurements, floor areas (including any total floor area), openings and orientation are approximate. No details are guaranteed, they cannot be relied upon for any purposes and they do not form part of any agreement. A party must rely upon its own inspection(s). Powered by www.floorplan.com



House to sell?

Hassle-free Property Part-Exchange is available from Quickmove Properties, with no estate agent fees, no solicitor's fees and no market uncertainty.

CONTACT US

01793 840917

advice@quickmoveproperties.co.uk

