

# Elm Tree Park, Bristol, Somerset, BS20



£205,000





This immaculately presented Wessex (40'x20') park home is located on a sought-after development in Portbury. The home has two double bedrooms, en suite bathroom, a private enclosed garden area and a driveway. The home has gas central heating and had a new boiler in 2021, the home is also vacant.

Elm Tree Park consists of 48 homes set in beautiful surroundings with established gardens, roads, paths, and a local bridleway. The development is in the hamlet of Sheepway in North Somerset but has easy access to the local towns by the local bus services. The M5 and A369 are close to the park to explore the surrounding area and provide easy access to cross over into South Wales. The coastal resort of Weston-Super-Mare is only a 30-minute drive away.

Age restriction: Over 50s

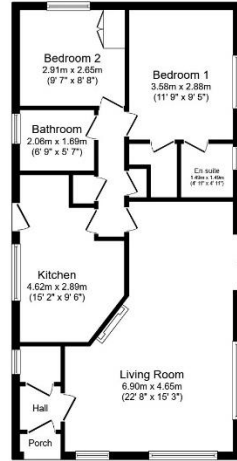
Pet friendly: No

Site fees (at time of listing): £208.24 per month

Residential license

### Key Features

- Driveway
- Established Park
- Garden space
- Over 50s
- Part Exchange Available
- Pre-owned park home
- Property is vacant
- Residential Development
- Two Bedrooms
- Well maintained home



### House to sell?

Hassle-free Property Part-Exchange is available from Quickmove Properties, with no estate agent fees, no solicitor's fees and no market uncertainty.

### CONTACT US

01793 840917

advice@quickmoveproperties.co.uk

