

Woodchurch, Kent, TN26



£220,000



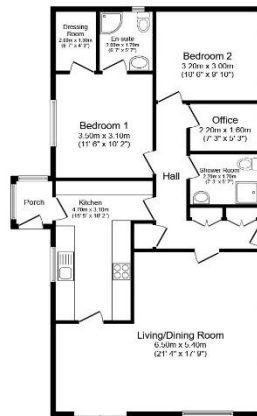
This is an exceptional two double bedroom (44'x22') park home bungalow situated on a large than average plot with a garage on this popular residential park. The home has a galley-style kitchen, comfortable living room with an electric fireplace, a study, two bedrooms and two bathrooms.

This park is set in rolling countryside, with the added benefit of superb fishing ponds, acres of open walking fields and a designated relaxation area. Less than a mile away in Woodchurch village, there are two public houses serving hot and cold food daily. This village has all the local amenities including a post office, farm shop, small general store, garage, and a doctor's surgery. Ashford is not far away and there is a bus stop at the entrance to the park making it convenient to travel to local villages and markets.

Age restriction: Over 50s
 Pet friendly: Yes
 Site fees: £286.89 per month
 Residential license

Key Features

- Over 50s
- Part Exchange Available
- Pet-Friendly
- Pre-owned park home
- Residential Development
- Village location
- Garage
- Spacious garden
- Two bedrooms
- Study



House to sell?
 Hassle-free Property Part-Exchange is available from Quickmove Properties, with no estate agent fees, no solicitor's fees and no market uncertainty.

CONTACT US

01793 840917

advice@quickmoveproperties.co.uk

