

# Old Tupton, Derbyshire, S42



£194,995



This brand new, modern-furnished Omar Regency (36'x20') luxury park home is perfect for those looking for a detached, easy to maintain, bungalow-style property. The home has a fully fitted kitchen with integrated appliances, comfortable living space, two double bedrooms, and two bathrooms. The landscaped exterior boasts parking and a garden area.

This established residential development is exclusively for the over 55's, to provide community living for like-minded residents.

This development is located in the countryside in the suburbs of Tupton, where you can find your local supermarket and convenience stores. The larger town of Chesterfield is just 4 miles away with all big town facilities and amenities. The development is on the outskirts of the Peak District, the UK's original national park with plenty of hiking, walking and cycle routes as well as quaint villages. The Matlock Baths and other popular tourist resorts are also nearby.

Age restriction: Over 55's

Pet friendly: Yes

Site fees: £199 per month

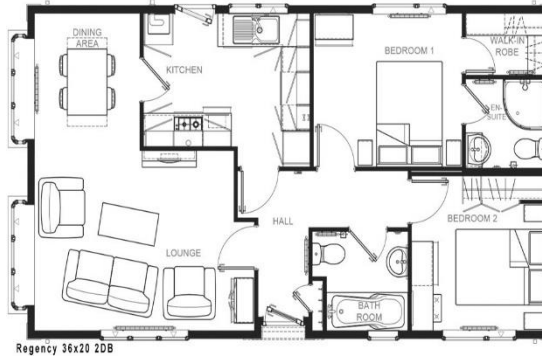
Some stock images have been used, the home on site may vary

### House to sell?

Hassle-free Property Part-Exchange is available from Quickmove Properties, with no estate agent fees, no solicitor's fees and no market uncertainty.

### Key Features

- Brand new home
- Countryside location
- Fully Furnished
- Garden space
- Over 55's
- Parking space
- Part Exchange Available
- Pet-Friendly
- Residential license



## CONTACT US

01793 840917

[advice@quickmoveproperties.co.uk](mailto:advice@quickmoveproperties.co.uk)

**Quickmove**  
PROPERTIES

