

Dolbeare Court, Saltash, PL12

Quickmove
PROPERTIES



£230,000

 x 2

 x 2

THE HOME

This pre-owned Pemberton Lyndale park home (40'x20') is perfect for those looking for a detached, easy to maintain, bungalow-style property. The home interior features a spacious, well-appointed kitchen and utility, dining and living area, with two double bedrooms, a family bathroom and a luxurious en suite.

THE PARK

Dolbear Court by RoyaleLife is a modern rural development and the perfect place for rest and relaxation. The secluded, gated location provides a safe environment, free from the stresses of town and city living. Exclusive for the over 45s, a community of like-minded people.

THE AREA

Set in glorious Cornish countryside near Saltash, this development has everything you'll need right on the doorstep. Located at the village of Landrake, just 10 minutes from the market town of Saltash, it's the ideal location for exploring the Cornish coastline.

Age restriction: Over 45s

Pet friendly: Yes

Site fees: TBC

Tenure: Virtual Freehold

Council Tax Band: A

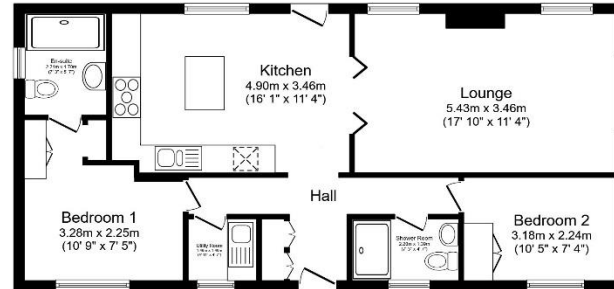
Residential license

House to sell?

Hassle-free Property Part-Exchange is available from Quickmove Properties, with no estate agent fees, no solicitor's fees and no market uncertainty.

Key Features

- Community Living
- Excellent Condition
- Fully Furnished
- Modern Fitted Kitchen
- Nearly new home
- Over 45s
- Part Exchange Available
- Pet-Friendly
- Pre-owned park home
- Residential Development



CONTACT US

01793 840917

advice@quickmoveproperties.co.uk

Quickmove
PROPERTIES

