

# Colchester, Essex, CO2



£165,000



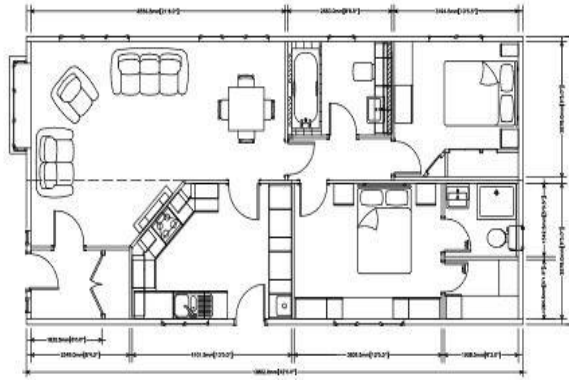
This brand new, modern-furnished Stately Chatsworth luxury park home (46x12) is perfect for those looking for a detached, easy to maintain, bungalow style retirement property. The home features a modern, fitted kitchen with integrated appliances that leads into a living room with comfortable furniture. The home also has two bedrooms.

Local amenities are just within a short walk providing a selection of shops, a post office, and a Tesco just a minute's drive away. The nearby town of Colchester, known to be the oldest recorded town in Britain, is home to a number of museums, medieval buildings and a Norman castle. Colchester also offers a diverse and lively shopping centre with a cosmopolitan atmosphere and thriving cultural life. Residents have beautiful countryside just on their doorstep and the coastal resort town of Clacton-on-Sea just a short drive away.

Age restriction: Over 50s  
 Pet friendly: Yes  
 Site fees: £250 per month  
 Residential license

### Key Features

- Brand new home
- Community Living
- Driveway
- Fully Furnished
- Shops and amenities nearby
- Integrated Appliances
- Over 50's
- Pet-friendly
- Residential Development



### House to sell?

Hassle-free Property Part-Exchange is available from Quickmove Properties, with no estate agent fees, no solicitor's fees and no market uncertainty.

### CONTACT US

01793 840917

advice@quickmoveproperties.co.uk

