

# Willows Riverside Park, Windsor, Berkshire, SL4



£165,000





This is a one double bedroom park home bungalow located on this sought after residential park and this particular home occupies a superb position on the park, overlooking the River Thames. This home was rebuilt in 2020 and must be viewed to be appreciated.

This established family residential park is designed for community living in a stunning, riverside location. The park has a social club, laundrette, private moorings, and a mobile library visits the park as well. The park is settled on the banks of the River Thames and takes advantage of all the river has to offer. Royal Windsor is also on your doorstep, with its parkland, miles of walks, frequent polo matches, tourist attractions and high street shops.

Age restriction: None

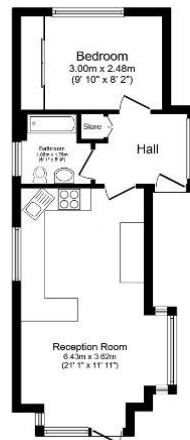
Pet friendly: No

Site fees: £172.08 per month

Residential license

### Key Features

- Family Park
- Part Exchange Available
- Pre-owned park home
- Residential Development
- Riverside Development
- Social Club
- River views
- Driveway
- No age restriction



### House to sell?

Hassle-free Property Part-Exchange is available from Quickmove Properties, with no estate agent fees, no solicitor's fees and no market uncertainty.

### CONTACT US

01793 840917

[advice@quickmoveproperties.co.uk](mailto:advice@quickmoveproperties.co.uk)

