

# Blisworth Park, Northamptonshire, NN7



£175,000



This is a well presented and spacious 42x20 two double bedroom park home bungalow, occupying an elevated position on the park. It boasts an en-suite shower room and walk in wardrobe to the main bedroom, re-fitted modern kitchen, gardens to all sides as well as a garage and parking.

Blisworth Park is an established residential development set in attractive countryside on the outskirts of Blisworth Village. The park is exclusive for those over 25s and cannot accept any pets. There is a resident park manager to ensure peace of mind and security for all park residents. Blisworth Park is located between Northampton and the market town of Towcester close to the A43 road and 4 miles from Junction 15 and 15A of the M1 motorway. Blisworth Village has many amenities including a supermarket, a newsagent and a medical practice. A regular bus service provides access to larger stores and supermarkets, in Northampton.

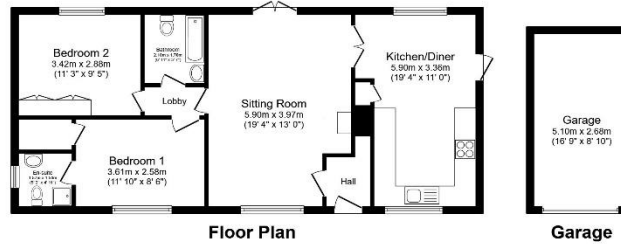
Over 25's  
Residential license  
Site fees (at time of listing): £50.13 per week, including water and sewerage

### House to sell?

Hassle-free Property Part-Exchange is available from Quickmove Properties, with no estate agent fees, no solicitor's fees and no market uncertainty.

### Key Features

- Elevated plot
- Excellent Condition
- Far reaching views
- Garage
- Modern design
- Over 25s
- Part Exchange Available
- Popular Residential Park
- Private parking
- Retirement Property



Total floor area 86.2 sq.m. (928 sq.ft.) approx  
This floor plan is for illustrative purposes only. It is not drawn to scale. Any measurements, floor areas (including any total floor area), openings and orientation are approximate. No details are guaranteed. They cannot be relied upon for any purpose and they do not form part of any agreement. No liability is taken for any error, omission or misstatement. A party must rely upon its own inspection(s). Powered by www.houseagent.com



### CONTACT US

01793 840917

advice@quickmoveproperties.co.uk

