

East View Park Homes, King's Lynn, Norfolk, PE33



£160,000



This home is a well presented two double bedroom (40'x20') park home bungalow built by Omar Park Homes located on this popular residential park for the over 55's. The home has a galley-style kitchen, comfortable lounge/diner, two double bedrooms, an en suite and a shower room. The exterior of the home features a private and easy-to-maintain garden and a driveway.

This exclusive, established residential development is near the Norfolk coast, and just 30 minutes from Snettisham Beach. The park is located on the edge of King's Lynn, a market town with lots of history. The town has plenty of amenities including supermarkets, shops, and pubs. The popular cities of Peterborough and Norwich are an hour drive each way.

Age restriction: Over 55s

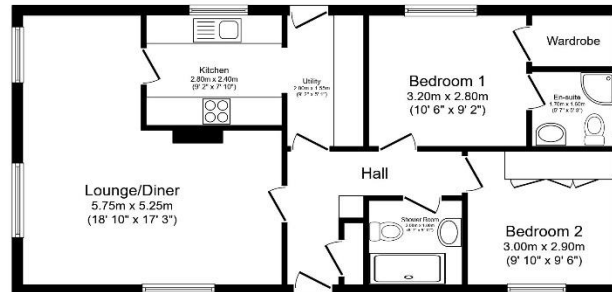
Site fees: £167.96 per month

No pets allowed

Residential license

Key Features

- Community Living
- Driveway
- Established Park
- Garden space
- Over 55's
- Part Exchange Available
- Pre-owned park home
- Residential Development
- Two Bedrooms
- Well maintained home



Total floor area 69.0 m² (743 sq.ft.) approx

This floor plan is for illustrative purposes only. It is not drawn to scale. Any measurements, floor areas (including any total floor area), openings and orientation are approximate. No details are guaranteed, they cannot be relied upon for any purpose and they do not form part of any agreement. No liability is taken for any error, omission or misstatement. A party must rely upon its own inspection(s). Powered by www.bosspart.com



House to sell?

Hassle-free Property Part-Exchange is available from Quickmove Properties, with no estate agent fees, no solicitor's fees and no market uncertainty.

CONTACT US

01793 840917

advice@quickmoveproperties.co.uk

