

Berwick-upon-Tweed, Northumberland, TD15

Quickmove
PROPERTIES



£164,950

 x 2

 x 2

This brand new, modern-furnished ABI Beaumont residential park home (42x14) is perfect for those looking for a detached, easy to maintain, bungalow-style retirement property. The home features comfortable, open plan living and kitchen areas with large windows, modern furniture, and two bedrooms.

The development is well located in 44 acres of stunning countryside on the outskirts of Berwick-upon-Tweed on the Scottish border. Despite its peaceful location, residents are still well connected, with quick access to the North and the South via the A1 which is just 2 minutes from the park. Local amenities include a Tesco superstore a 3-minute drive away and the town of Berwick-upon-Tweed a 5-minute drive away. Spittal beach is a dog-friendly beach and is only a few miles away.

Age restriction: Over 45s

Pet friendly: Yes

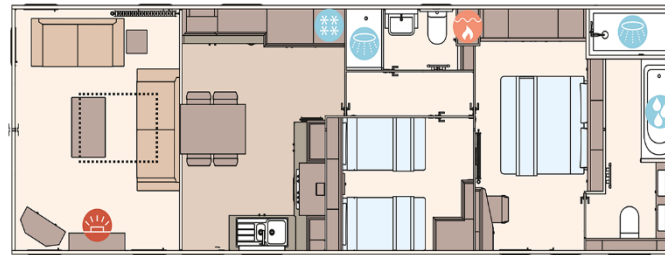
Site fees: £240 per month

Residential license

Stock images have been used, the home on-site may vary.

Key Features

- Brand new home
- Countryside location
- Fully furnished
- Garden shed
- On-site bar and restaurant
- Over 45's
- Parking space
- Part exchange available
- Pet friendly park
- Residential park home



House to sell?

Hassle-free Property Part-Exchange is available from Quickmove Properties, with no estate agent fees, no solicitor's fees and no market uncertainty.

CONTACT US

01793 840917

advice@quickmoveproperties.co.uk

