

# Poole, Dorset, BH16

**Quickmove**  
PROPERTIES



£165,000

 x 2

 x 2

This brand new, modern-furnished Elevation (40'x14') luxury park bungalow is perfect for those looking for a detached, easy to maintain, bungalow-style property. The home has an open plan kitchen, living and dining room. There are two double bedrooms, an en suite and a family bathroom.

This home is located on a private, gated development located in a wooded elevated setting with a private fishing lake on site. The development is convenient due to easy access to neighbouring towns including the traditional town of Wimborne, Poole, and Bournemouth, as well as surrounding country parks including the New Forest and Hartland Moor National Nature Reserve which offer wonderful walking trails.

Age restriction: Over 45s

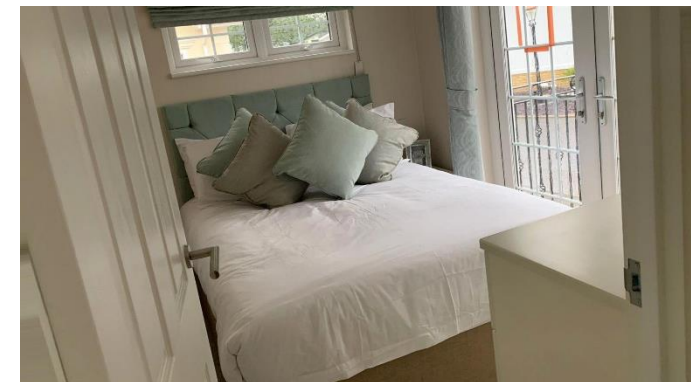
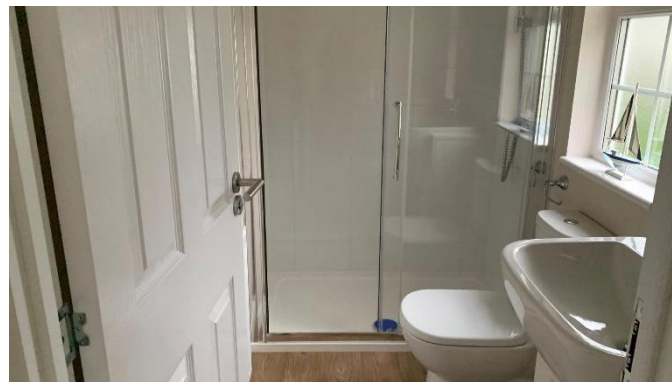
Pet friendly: Yes (2 per home)

Site fees: £263.38 per month

Residential license

### Key Features

- 10-Year Goldshield Warranty
- Brand new home
- Fully Fitted Kitchen
- Fully Furnished
- Gated and secure community
- Off-road Parking
- Pet-Friendly
- Residential Development
- Stamp Duty Exempt
- Over 45s



### House to sell?

Hassle-free Property Part-Exchange is available from Quickmove Properties, with no estate agent fees, no solicitor's fees and no market uncertainty.

### CONTACT US

01793 840917

[advice@quickmoveproperties.co.uk](mailto:advice@quickmoveproperties.co.uk)

