

Tewkesbury, Gloucester, GL2

Quickmove
PROPERTIES



£265,000

 x 2

 x 2

This brand new, modern-furnished Oakgrove Clarendon (40'x20') luxury park home is perfect for those looking for a detached, easy to maintain, bungalow style retirement property. The landscaped exterior boasts an adjacent garage and a driveway. The spacious kitchen features integrated appliances. The home also has two double bedrooms, the master bedroom has an en-suite.

The park is a modern development of beautifully constructed modern park homes which offers a stress-free park living experience in a friendly and safe community. Idyllically situated within the Gloucester suburbs, this park is the perfect place for rest and relaxation.

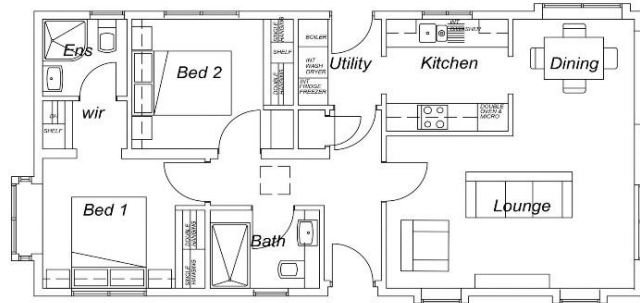
The village of Twigworth is set between Gloucester and Tewkesbury with easy access to Cheltenham and the Cotswolds area of outstanding natural beauty. Near the historic city of Gloucester, the park is also within easy striking distance of the Forest of Dean making this park an ideal base for beautiful walks. The park has a real community spirit where everyone respects their neighbours and their surroundings.

Site fees: £238.09 per month
 Pet Friendly: Yes
 Age Restrictions: Over 50's

House to sell?
 Hassle-free Property Part-Exchange is available from Quickmove Properties, with no estate agent fees, no solicitor's fees and no market uncertainty.

Key Features

- Brand new home
- Community Living
- Exceptionally High Specification
- Fully Furnished
- Garage and Driveway
- Landscaped grounds
- Part Exchange Available
- Pet-Friendly
- Popular Residential Park
- Two Double Bedrooms



CONTACT US

01793 840917

advice@quickmoveproperties.co.uk

