

# Tewkesbury, Gloucester, GL2



£269,950



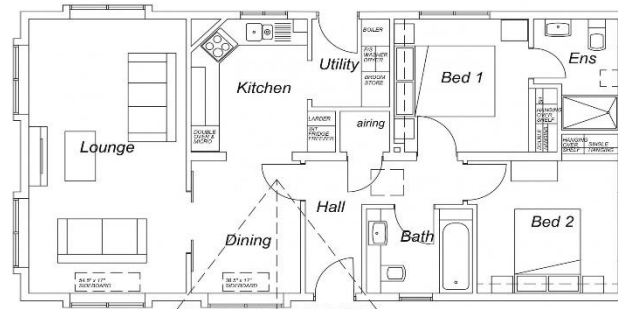
This brand new, modern-furnished Oakgrove Waverton (42'x22') luxury park home is perfect for those looking for a detached, easy to maintain, bungalow style retirement property. The landscaped exterior boasts an adjacent garage with power and lighting, and a driveway. This home has a spacious, open-plan layout with large windows. The spacious, modern fitted kitchen features integrated appliances. The home also has two double bedrooms, the master bedroom has a built-in wardrobe and an en-suite.

Idyllically situated within the Gloucester suburbs, this park is the perfect place for rest and relaxation. The village of Twigworth is set between Gloucester and Tewkesbury with easy access to Cheltenham and the Cotswolds area of outstanding natural beauty. Near the historic city of Gloucester, the park is also within easy striking distance of the Forest of Dean making this park an ideal base for beautiful walks. The park has a real community spirit where everyone respects their neighbours and their surroundings.

Site fees: £238.09 per month  
 Pet Friendly: Yes  
 Age Restrictions: Over 50's

### Key Features

- Brand new home
- Community Living
- Exceptionally High Specification
- Fully Furnished
- Garage and Driveway
- Landscaped gardens
- Part Exchange Available
- Pet-Friendly
- Popular Residential Park
- Two Double Bedrooms



**House to sell?**  
 Hassle-free Property Part-Exchange is available from Quickmove Properties, with no estate agent fees, no solicitor's fees and no market uncertainty.

### CONTACT US

01793 840917

[advice@quickmoveproperties.co.uk](mailto:advice@quickmoveproperties.co.uk)

