

Wimborne, Dorset, BH21



£225,000



This brand new, modern-furnished Omar Image home (40'x20') is perfect for those looking for a detached, easy to maintain, bungalow style retirement property. The home features two bedrooms, a modern kitchen with integrated appliances and a living space with comfortable furniture.

The home is set within a private 60-acre gated country estate, offering secure lifestyle living for like-minded over 45s. A short distance from this development is the Moors Valley Country Park which provides lots of outdoor pursuits with beautiful walks, cycle paths and a golf course. The nearby market town of Wimborne boasts one of the largest open and covered markets in the south of England.

Age restriction: Over 45's

Pet friendly: Yes (2 per home)

Site fees: £300.78 per month

Residential license

Key Features

- Brand new home
- Cheaper Living Costs
- Fully Furnished
- Gated and secure community
- Part Exchange Available
- Pets welcome
- Residential Development
- Two bedrooms
- High specification
- Modern home

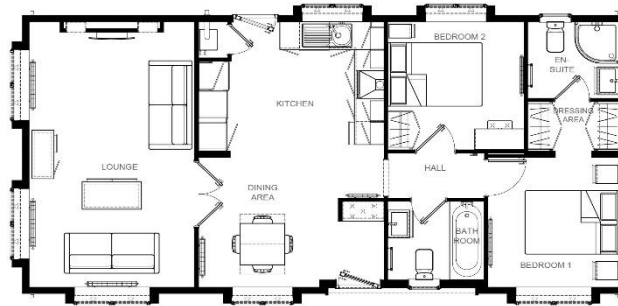


Image 40' x 20' 2DB



CONTACT US

01793 840917

advice@quickmoveproperties.co.uk

