

Epworth, Lincolnshire, DN9

Quickmove
PROPERTIES



£177,995

 x 2

 x 2

This brand new, modern-furnished Omar Image (40'x20') luxury park home is perfect for those looking for a detached, easy to maintain, bungalow style retirement property. The home features a modern kitchen with integrated appliances, a comfortable living area and two double bedrooms.

This residential development is a brand-new park that will consist of a total of 35 homes. The homes are situated in stunning countryside and residents have free use of the leisure parks fishing lakes. The development is well located for making the most of the Lincolnshire countryside while remaining well connected, with quick access to the North and South via the M18 just 15 15-minute drive away. Scunthorpe and Doncaster are located 10 miles from the park, offering large-town facilities and amenities. The historic and picturesque town of Gainsborough is 8 miles from the park.

Age restriction: Over 50s

Pet friendly: Yes

Site fees: £167 per month

Residential license

Stock images have been used, the home on site may vary.

Key Features

- Brand new home
- Community Living
- Countryside location
- Fully Furnished
- Over 50s
- Two bedrooms
- Part Exchange Available
- Residential Development
- Pet friendly
- Fishing lakes

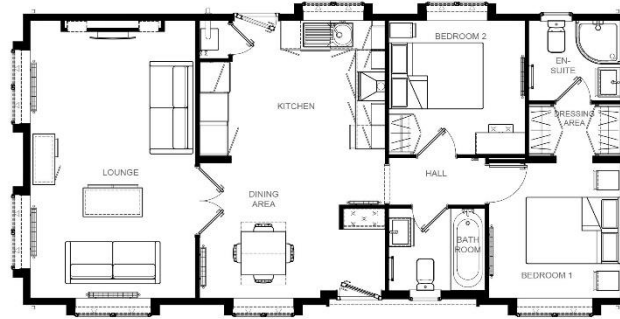


Image 40' x 20' 2DB



House to sell?

Hassle-free Property Part-Exchange is available from Quickmove Properties, with no estate agent fees, no solicitor's fees and no market uncertainty.

CONTACT US

01793 840917

advice@quickmoveproperties.co.uk

Quickmove
PROPERTIES

