

Wimborne, Dorset, BH21



£310,000



This brand new, modern-furnished Omar Image (40'x20') luxury park home is perfect for those looking for a detached, easy to maintain, bungalow-style property. The home features an open plan kitchen and dining area, separate living room, two double bedrooms, an en suite and a bathroom. The home also has a driveway.

This over 45's development on the outskirts of Bournemouth is pet friendly and is situated within the beautiful countryside. From the development you'll find some of the best scenery, countryside, and beaches in the UK right on your doorstep, it's also adjacent to the Castleman Trailway, a famous countryside cycling and walking route that runs through East Dorset. The gorgeous golden sandy beaches of Bournemouth and Sandbanks are a short drive away and Poole is within easy reach from the park. More than half the county of Dorset is designated as an Area of Outstanding Natural Beauty.

Age restrictions: Over 45's

Pet friendly: Yes

Site fees: £285 per month

Stock images have been used, the home on site may vary

House to sell?

Hassle-free Property Part-Exchange is available from Quickmove Properties, with no estate agent fees, no solicitor's fees and no market uncertainty.

Key Features

- Brand new home
- Countryside location
- Driveway
- Fully Furnished
- Over 45s
- Part Exchange Available
- Pet-Friendly
- Residential Development
- Shops and amenities nearby
- Short drive to the coast

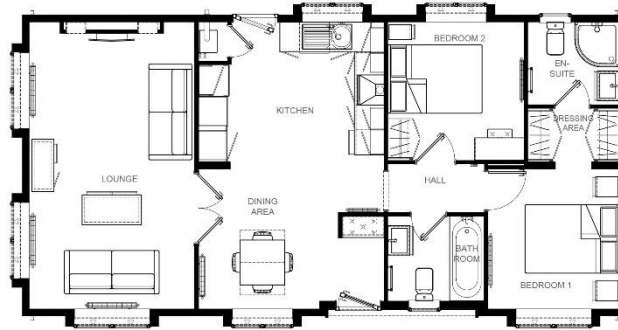


Image 40' x 20' 2DB



CONTACT US

01793 840917

advice@quickmoveproperties.co.uk

