

Tewkesbury, Gloucestershire, GL20

Quickmove
PROPERTIES



£264,995

🛏 x 2

🛁 x 2

This brand new, modern-furnished Omar Image (45'x20') luxury park home is perfect for those looking for a detached, easy to maintain, bungalow-style property. The home features a spacious kitchen and dining area, a separate living room with large windows, two double bedrooms and two bathrooms. The home has views over the river bank, decking and parking for two cars.

This picturesque development is located down a country lane on the outskirts on Twyning in Gloucestershire, alongside the River Avon. Cheltenham, Worcester and Gloucester are within easy reach, providing plenty of amenities. The nearby village of Twyning offers the nearest amenities including a village shop and post office.

Age restriction: Over 50s

Pet friendly: Yes

Site fees (at time of listing): £194.73 per month

Residential license

Stock images have been used, the home on site may vary.

Key Features

- Brand new home
- Community Living
- Countryside location
- Driveway
- Fully Furnished
- Over 50's
- Part Exchange Available
- Pet-friendly
- Residential Park Home
- Riverside Location

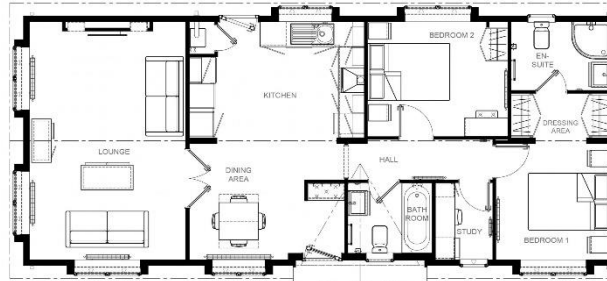


Image 45' x 20' 2DB



House to sell?

Hassle-free Property Part-Exchange is available from Quickmove Properties, with no estate agent fees, no solicitor's fees and no market uncertainty.

CONTACT US

01793 840917

advice@quickmoveproperties.co.uk

