

Thetford, Norfolk, IP24



£275,000



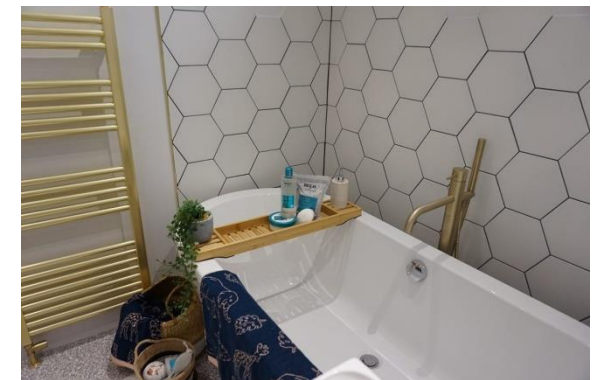
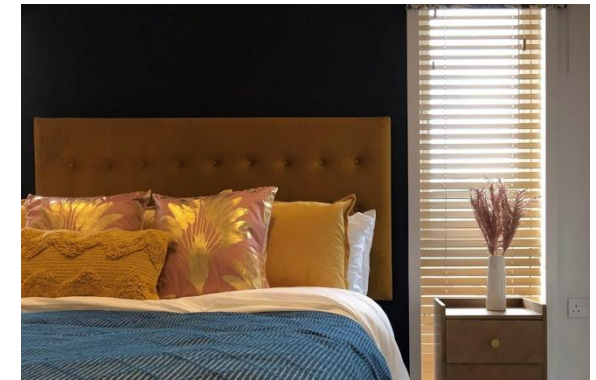
This brand new, modern-furnished Pathfinder Dusk luxury park bungalow (42'x22') is perfect for those looking for a detached, easy to maintain, bungalow-style retirement property. The landscaped exterior boasts large windows, a garden area and a parking space. The home has a spacious, open plan kitchen and dining space, a comfortable living room, two bedrooms and two bathrooms.

This home is located on an exclusive gated development of detached luxury park homes for the over 45s. Set within beautifully landscaped grounds, ideal for making the most of wonderful walking trails as well as local amenities. This stunning new residential development is located near Great Hockham, a highly sought-after village in Norfolk. This location offers residents the opportunity to enjoy a quintessential English lifestyle from its country walks, culture, history and stunning noble buildings

Age restriction: Over 45s
 Pet friendly: Yes
 Site fees: £245.26 per month
 Residential license

Key Features

- 10-Year Goldshield Warranty
- Brand new home
- Part exchange available
- Gated and secure community
- Outstanding Location
- Pet-Friendly
- Popular development
- Stamp Duty Exempt
- Fully Furnished



House to sell?
 Hassle-free Property Part-Exchange is available from Quickmove Properties, with no estate agent fees, no solicitor's fees and no market uncertainty.

CONTACT US

01793 840917

advice@quickmoveproperties.co.uk

