

Bude, Cornwall, EX23



£240,000



This brand new, modern furnished Pathfinder Lighthouse luxury park bungalow (42'x20') is perfect for those looking for a detached, easy to maintain, bungalow style retirement property. The home features a modern kitchen with integrated appliances, a spacious living room and two double bedrooms.

In stunning surroundings and within a mile of the lovely seaside resort of Widemouth Bay, the location is ideal for making the most of glorious coastlines, offering wonderful walks, vast sandy landscapes, and unforgettable sunsets. An excellent base for exploring the many treasures of the Cornish coastline, the town of Bude is only 3 miles away, where you will find all you need in this bustling Cornish town.

Age restriction: Over 45s

Pet friendly: Yes

Site fees (at time of listing): £256.95 per month

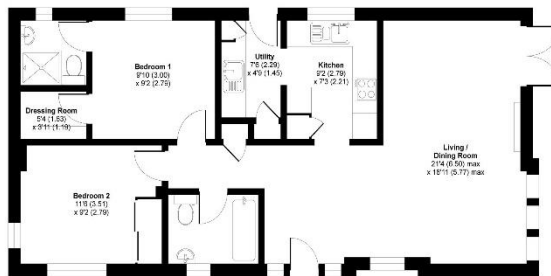
Residential license

Key Features

- Brand new home
- Community Living
- Fully Fitted Kitchen
- Fully Furnished
- Luxury 2 Bed Park Bungalow
- On Site Facilities
- Residential development
- Residential Park
- Stamp Duty Exempt

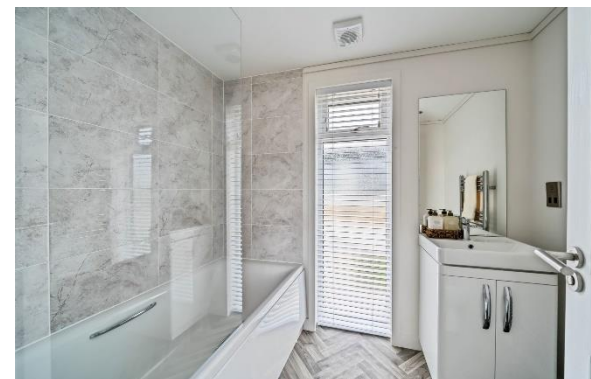
Apple Blossom Way, Meadowlands Court, Poundstock, Bude, EX23

Approximate Area = 765 sq ft / 71 sq m
For information only - Not to scale



GROUND FLOOR

Approved Property Information
This plan produced in accordance with RICS Property Measurement Standards incorporating:
Edition of Property Measurement Standards (RPS2) (November 2018)
Produced by Property Group Management Company Limited (RPS2) (2020)



House to sell?

Hassle-free Property Part-Exchange is available from Quickmove Properties, with no estate agent fees, no solicitor's fees and no market uncertainty.

CONTACT US

01793 840917

advice@quickmoveproperties.co.uk

Quickmove
PROPERTIES



The Property
Ombudsman