

# Wareham, Dorset, BH20



£180,000



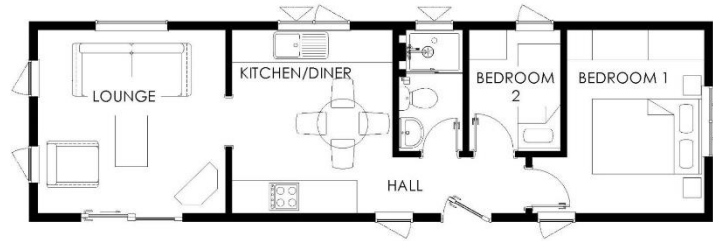
This brand new, modern-furnished Tingdene Cosgrove luxury park bungalow (40'x14') is perfect for those looking for a detached, easy-to-maintain, bungalow-style retirement property. The landscaped exterior boasts covered large windows, a garden area and a parking space. The home features a kitchen with integrated appliances, a comfortable living room, two bedrooms, and one bathroom.

The park is located near the River Frome and a surrounding nature reserve. Less than a 10-minute drive away is the historic market town of Wareham which features all the amenities you may need including the high street with many shops, bars and restaurants as well as a garden centre.

Age restriction: Over 45's  
 Site fees: £222.69 per month  
 Pet friendly: Yes  
 Residential Licence

### Key Features

- Brand new home
- Close to the beach
- Community Living
- Countryside location
- Fully Furnished
- Over 45s
- Part Exchange Available
- Pets welcome
- Residential Development
- Stamp Duty Exempt



### House to sell?

Hassle-free Property Part-Exchange is available from Quickmove Properties, with no estate agent fees, no solicitor's fees and no market uncertainty.

### CONTACT US

01793 840917

advice@quickmoveproperties.co.uk

